

15 MOTE HOUSE

Guide Price £450,000
(other fees apply)



It can only be Audley.



This charming and spacious one bedroom, second floor apartment has a prime location being one of fifteen properties within Mote House.

Benefitting from lift access and being in the same building as the village amenities, the property comprises of a recently repainted hallway with parquet flooring leading to a bedroom with built in wardrobes, a bathroom with separate shower, a fitted kitchen, and a generously sized lounge/dining room with an electric fire.

Key Features

- Located within Mote House
- Bedroom has built in wardrobes
- Permitted allocated parking space
- SieMatic kitchen with integrated appliances including fridge freezer, Dishwasher, oven, hob, microwave oven and washing machine
- Generously sized lounge/dining room
- Views across mote park

Fees

Monthly management fee £1127.60

Annual ground rent £250

Parking: No parking fees apply

Bistro credit: £92

Council Tax Band: F

Tenure: Leasehold

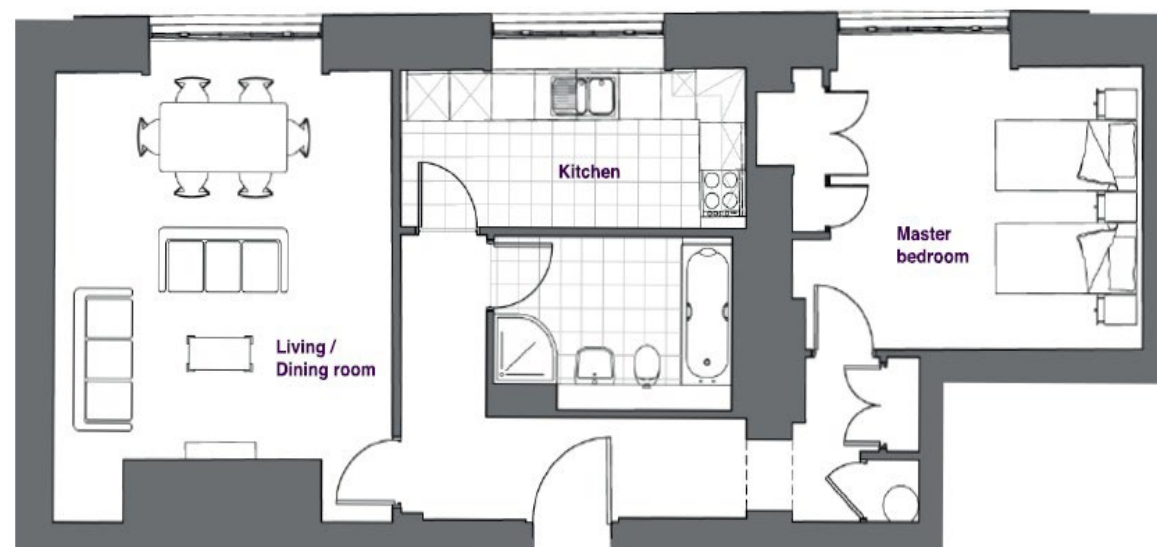
Audley owners have our firm undertaking that their monthly management fee will increase only once a year. A deferred management charge also applies to this property. This charge is payable on change of occupier and based on the final achieved sale price or the open market value, whichever is greater. 1% per year or part-year up to a maximum of 15 years (15%).

Viewing by appointment with the sales office.

01622 737 279 motesales@audleyvillages.co.uk



Internal Measurements	Metric (m)	Imperial (ft)
Living room / Dining room	5.37 X 4.76	17'7" X 15'7"
Kitchen	4.89 X 2.06	16'1" X 6'9"
Main Bedroom	4.04 X 4.43	13'3" X 14'6"



Built in wardrobes in bedrooms have not been included in the overall dimensions. Maximum measurements shown.

Furniture shown to illustrate possible room layouts and not included in sale.

Score	Energy rating	Current	Potential
92+	A		
81-91	B		
69-80	C	73 C	78
55-68	D		
39-54	E		
21-38	F		
1-20	G		

