

TWO BEDROOM, FIRST FLOOR APARTMENT

**10 Dellwood Court (B07), Plot 50. Audley Wycliffe Park,
Jones Way, Horsleys Green, Buckinghamshire HP14 3XL
01494 324 966**

Property specifications:

- First floor apartment with lift access
- Two double bedrooms
- En suite shower room and built-in wardrobes in the main bedroom
- Guest bathroom with Villeroy & Boch sanitaryware and Hansgrohe fittings
- Dual-aspect, open plan kitchen/living/dining room
- South-east facing balcony off the living room with views of the landscaped grounds
- Fitted Nobilia handleless kitchen with integrated Neff appliances

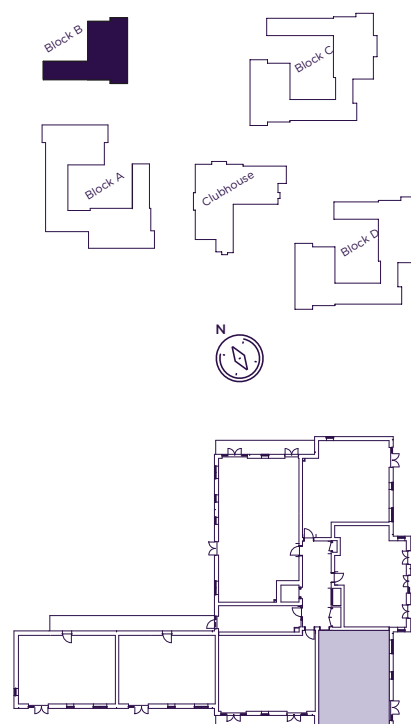
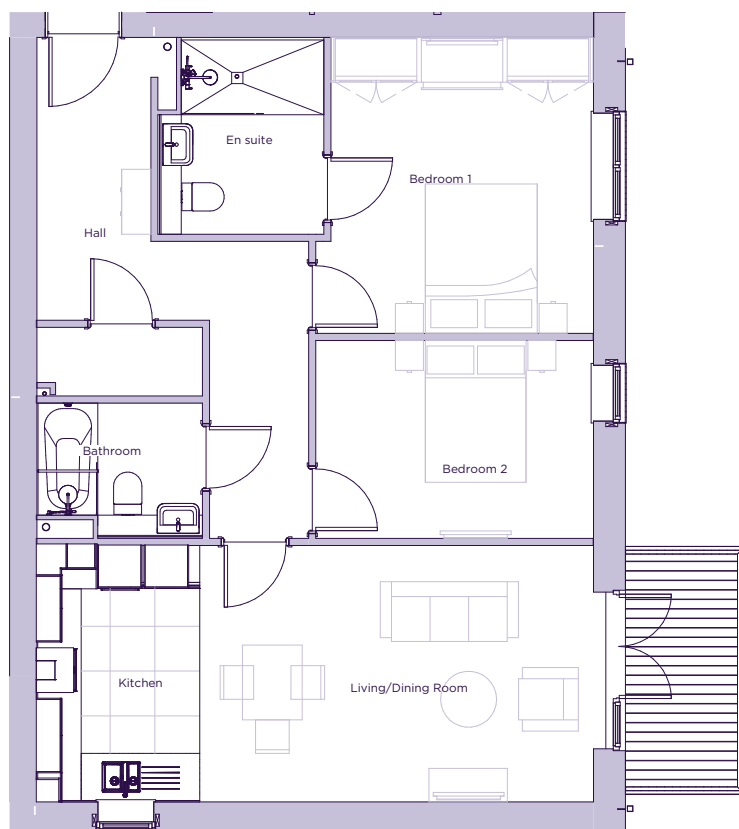
Please see the village brochure and key facts for further information.



Images for illustration purposes only.

THE LAYOUT

**10 Dellwood Court (B07), Plot 50. Audley Wycliffe Park,
Jones Way, Horsleys Green, Buckinghamshire HP14 3XL**



Internal Measurements	Metric (m)	Imperial (ft)
Bedroom 1	3.77 x 5.15	12'4" x 16'11"
Bedroom 1 Wardrobe	2.39 x 2.22	7'10" x 7'4"
Bedroom 2	2.92 x 5.32	9'7" x 17'6"
Kitchen	3.36 x 4.31	11'0" x 14'2"
Living Room	3.32 x 5.16	10'11" x 16'11"
Terrace	3.51 x 1.80	11'6" x 5'11"

These floor plans are illustrative and for marketing purposes only. Maximum measurements are shown with longer dimension quoted first. Dimensions are quoted for the main area of the room only. Built-in wardrobes not included in the overall room dimensions. Furniture shown to illustrate possible room layouts and not included in sale. Designs vary according to plot. All details should be checked at the Sales Office. November 2021.