

19 BEECH COURT

Guide Price £420,000
(other fees apply)



It can only be Audley.



This charming light-filled south facing apartment boasts a private sunny balcony with picturesque views over our four-acre village and main house.

The spacious main bedroom features double built-in wardrobes and an ensuite with a bath. A separate guest shower room is conveniently located off the hallway.

Key Features

- Prime location on the third floor of Beech Court with lift access
- Sunny double aspect lounge-dining room
- Private balcony with outstanding views over the village & grounds
- Kitchen with integrated appliances including fridge freezer, dishwasher, oven, hob, microwave oven, and a washer dryer
- Parking is nearby, along with easy access to the main house and its full range of facilities

Fees

Monthly management fee £1165.93

Annual ground rent £200

Parking: No parking fees apply

Council Tax Band: D

Tenure: Leasehold

Audley owners have our firm undertaking that their monthly management fee will increase only once a year. A deferred management charge also applies to this property. This charge is payable on change of occupier and based on the final achieved sale price or the open market value, whichever is greater. 1.5% per year of the final achieved sale price, or the open market value, whichever is greater, in year 1 followed by 0.5% per subsequent years up to a maximum of 5.

Viewing by appointment with the sales office.

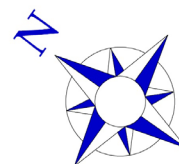
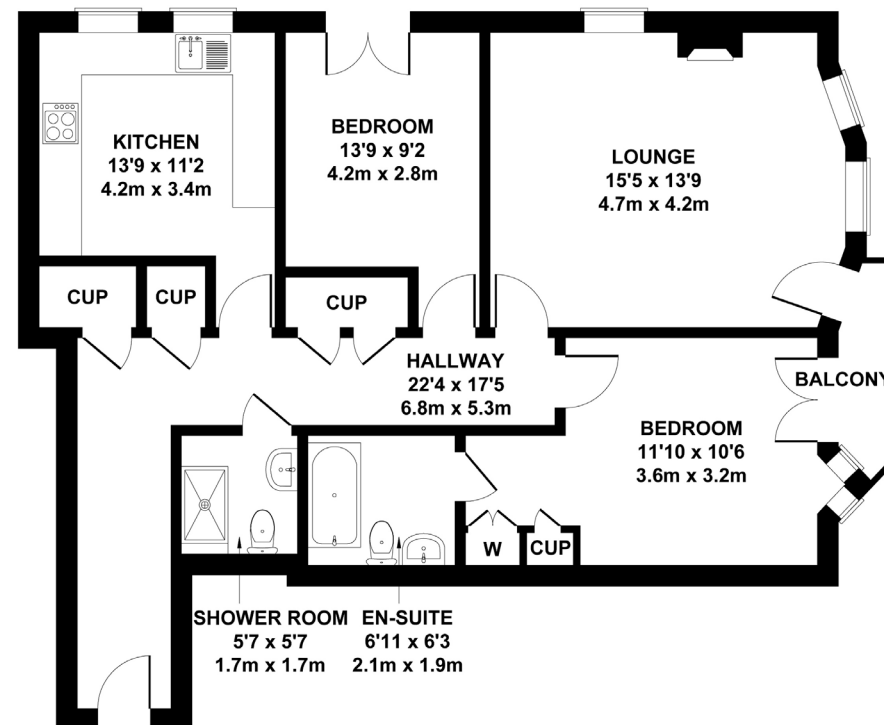
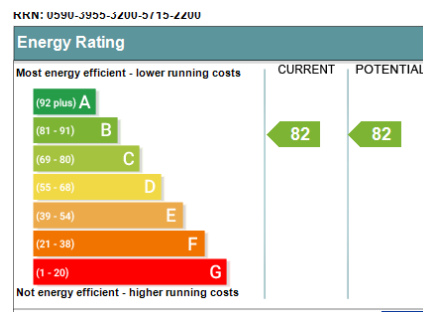
01892 457 002 willicombesales@audleyvillages.co.uk



Internal Measurements	Metric (m)	Imperial (ft)
Lounge room / Dining room	4.7 x 4.2	15'5"x13'9"
Kitchen	4.2 x 3.4	13'9"x11'2"
Main Bedroom	3.6 x 3.2	11'10"x10'6"
Bedroom two	4.2 x 2.8	13'9"x10'6"
Shower Room	1.7 x 1.7	5'7"x5'7"

Built in wardrobes in bedrooms have not been included in the overall dimensions. Maximum measurements shown.

Furniture shown to illustrate possible room layouts and not included in sale.



APPROX. FLOOR
AREA 919 SQ.FT.
(85.4 SQ.M.)

Not to Scale. Produced by The Plan Portal 2025
For Illustrative Purposes Only.

