

15 INGLEWOOD HOUSE

Guide Price £575,000
(other fees apply)



It can only be Audley.



This generously proportioned apartment is conveniently positioned within the ever-popular Inglewood House, enjoying the most stunning countryside views. The well appointed and well-presented accommodation includes a large living room diner that provides double height windows maximising the views and light, a kitchen breakfast room with a modern Siematic kitchen and feature port hole style window, a large bedroom with built-in wardrobes and en suite shower room, whilst furthermore there is a separate cloakroom WC and storage cupboard leading from the spacious entrance hallway.

Key Features

- Sizeable first floor apartment situated within Inglewood House
- Stunning countryside views
- Attractive features including high corniced ceilings & double height windows
- SieMatic fitted kitchen with integrated appliances including fridge freezer, dishwasher, oven, microwave oven, ceramic halogen hob and a washer dryer

Fees

Monthly management fee £1115.10

Annual ground rent £250

Parking: No parking fees apply

Bistro credit: £85.76

Council Tax Band: Confirmed via West Berkshire Council

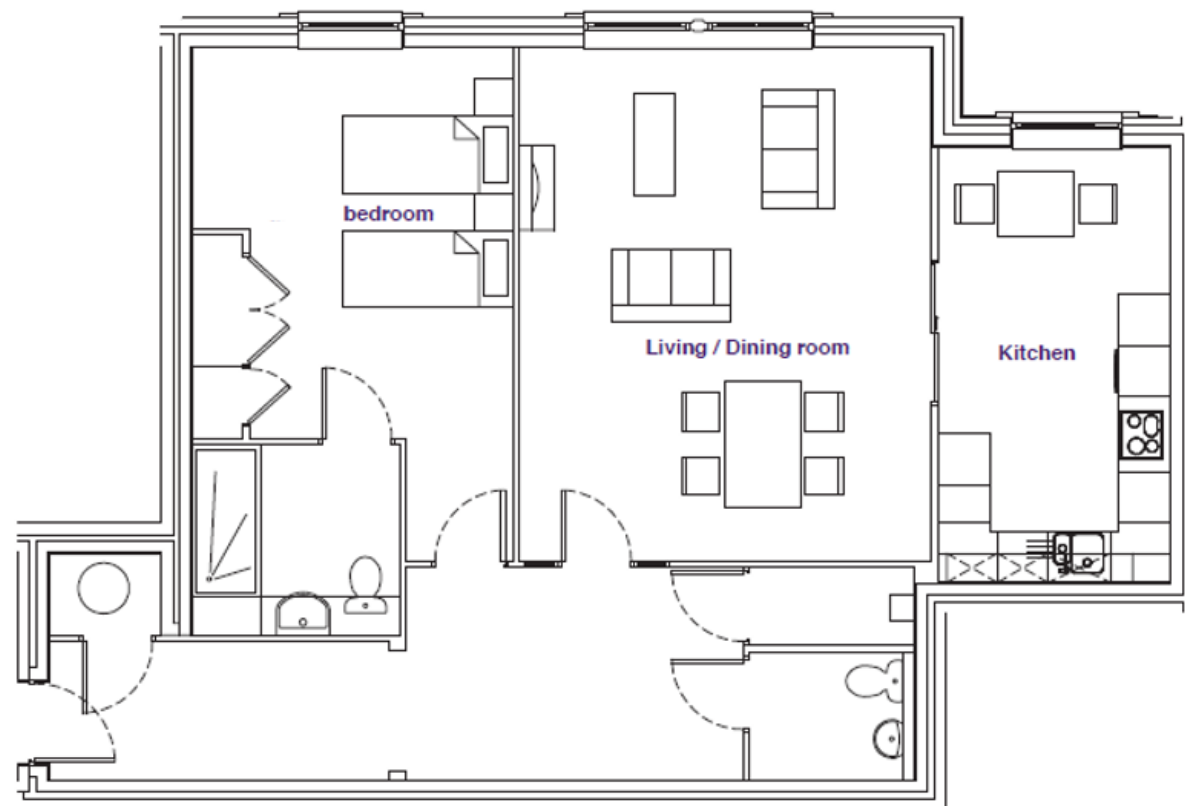
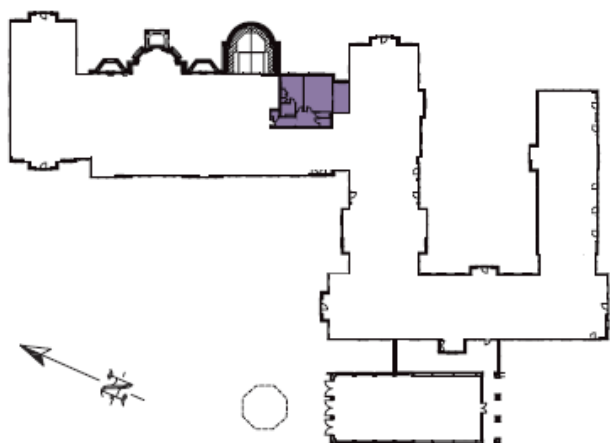
Tenure: Leasehold

Audley owners have our firm undertaking that their monthly management fee will increase only once a year. A deferred management charge also applies to this property, please ask the sales team for more information.

Viewing by appointment with the sales office.

01488 682 100 inglewoodsales@audleyvillages.co.uk





Internal Measurements	Metric (m)	Imperial (ft)
Living room / Dining room	4.90m x 6.05m	16'1" x 19'10"
Kitchen	5.15m x 2.75m	16'11" x 9'0"
Bedroom	3.80m x 4.60m	12'6" x 15' 1"
Sq ft	980	

Built in wardrobes in bedrooms have not been included in the overall dimensions. Maximum measurements shown.

Furniture shown to illustrate possible room layouts and not included in sale.

Score	Energy rating	Current	Potential
92+	A		
81-91	B		
69-80	C	72 C	72 C
55-68	D		
39-54	E		
21-38	F		
1-20	G		

