

20 BEECH COURT

Guide Price £315,000
(other fees apply)



It can only be Audley.



This charming and spacious one bedroom apartment is located on the second floor of Beech Court. It features a full length south-facing balcony accessible from the lounge and bedroom offering views across the park and village.

The property benefits from a large bright lounge/diner, built-in wardrobes in the bedroom and fitted kitchen with appliances.

Key Features

- One-bedroom self-contained apartment with balcony.
- Spacious Bathroom with large walk-in shower, basin and WC
- Bedroom with fitted wardrobes
- Lift and stair access
- Pre-bookable guest suite for friends/relatives to come and stay
- Fitted kitchen with integrated Neff appliances including fridge freezer, oven, hob, and dishwasher, washer dryer machine in fitted utility room.
- Professionally cleaned carpets
- Free use of Health club and heated swimming pool
- Regularly serviced central heating boiler
- Allocated parking to front of the building

Fees

Monthly management fee £1,121.54

Annual ground rent £200

Parking: No parking fees apply

Council Tax Band: C

Tenure: Leasehold

(Curtains included in the sale price)

Audley owners have our firm undertaking that their monthly management fee will increase only once a year. A deferred management charge also applies to this property, please ask the sales team for more information.

Viewing by appointment with the sales office.

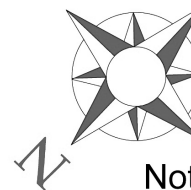
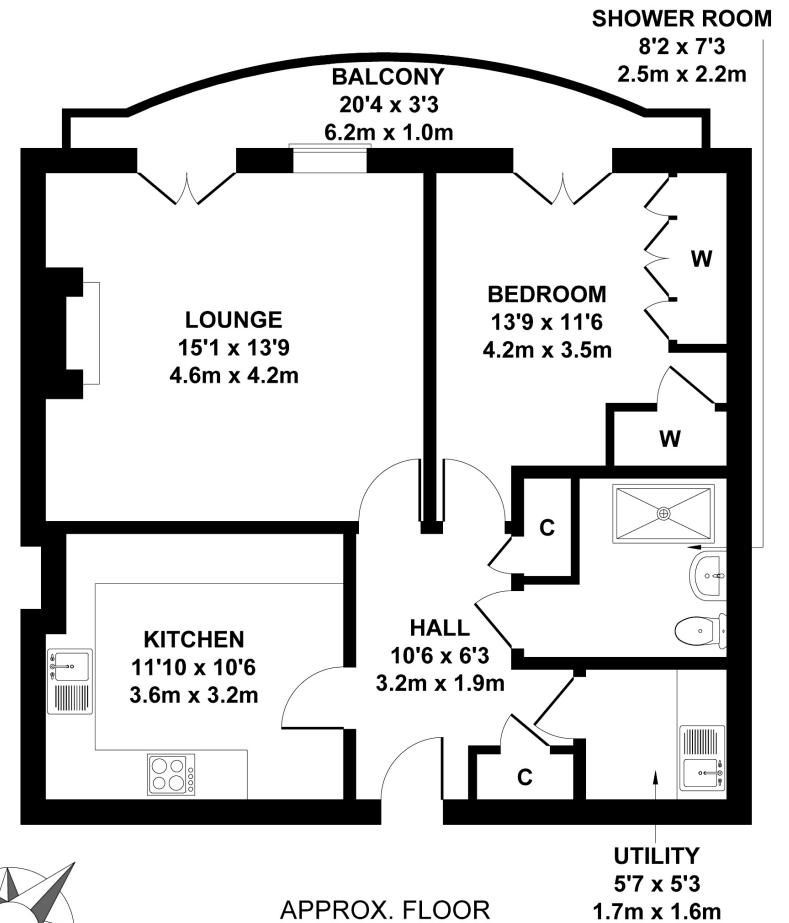
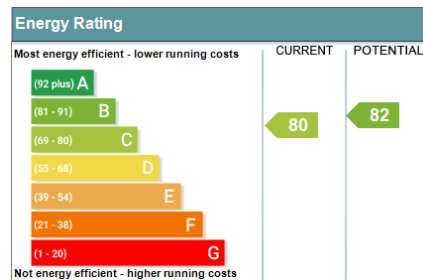
01892 457 002 willicombesales@audleyvillages.co.uk



Internal Measurements	Metric (m)	Imperial (ft)
Living room / Dining room	4.6 x 4.2	15'1" x 13'9"
Kitchen	3.6 x 3.2	11'10" x 10'6"
Bedroom	4.2 x 3.5	13'9" x 11'6"
Shower Room	1.80 x 2.2	8'2" x 3'3"
Hall	3.2 x 1.9	10'6" x 6'3"

Built in wardrobes in bedrooms have not been included in the overall dimensions. Maximum measurements shown.

Furniture shown to illustrate possible room layouts and not included in sale.



APPROX. FLOOR
AREA 666 SQ.FT.
(61.9 SQ.M.)

Not to Scale. Produced by The Plan Portal 2024
For Illustrative Purposes Only.

