

# TWO BEDROOM, GROUND FLOOR APARTMENT

**1 Earle House, Plot 57. Audley Fairmile,  
Fairmile Lane, Cobham KT11 2BU  
01932 366 139**

## Property specifications:

- Terrace accessible from the living/dining room
- Modern Integrated SieMatic kitchen with Neff appliances and Corian worktops
- Main bedroom with ample storage
- Large second bedroom
- Conveniently situated in the main house
- En suite and guest bathroom with Villeroy & Boch sanitaryware
- Open plan layout in the kitchen/living/dining room
- Additional guest bathroom
- Membership to the Audley Club

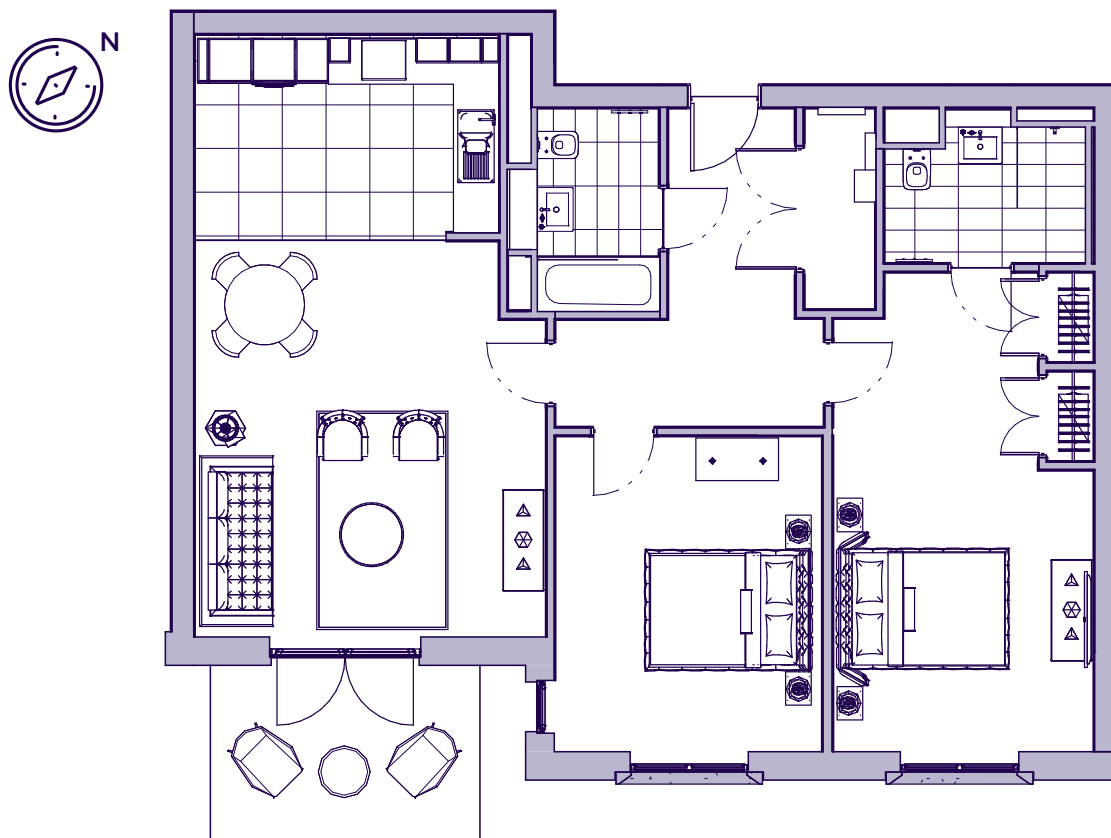
Please see the village brochure and key facts for further information.



Images for illustration purposes only.

# THE LAYOUT

**1 Earle House, Plot 57. Audley Fairmile,  
Fairmile Lane, Cobham KT11 2BU**



Internal Measurements	Metric (m)	Imperial (ft)
Living/Dining Room	5.46 x 4.80	17'11" x 15'9"
Kitchen	2.68 x 4.15	8'9" x 13'7"
Main Bedroom	6.61 x 3.60	21'8" x 11'10"
Bedroom 2	4.36 x 3.69	14'4" x 12'1"
Terrace	2.45 x 3.70	8'0" x 12'2"



These floor plans are illustrative and for marketing purposes only. Maximum measurements are shown with longer dimension quoted first. Dimensions are quoted for the main area of the room only. Built-in wardrobes not included in the overall room dimensions. Furniture shown to illustrate possible room layouts and not included in sale. Designs vary according to plot. All details should be checked at the Sales Office. October 2021.