

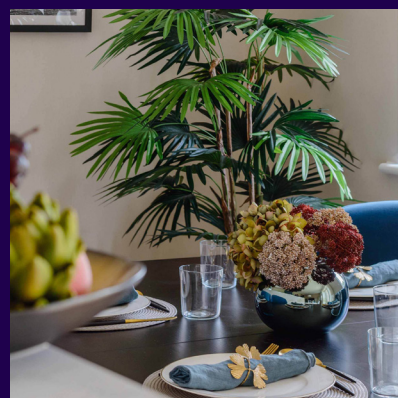
TWO BEDROOM, GROUND FLOOR APARTMENT

**44 Woodside House. Audley Shiplake Meadows,
Meadow Chase, Reading Road, Henley-on-Thames RG9 3JN
01182 349 279**

Property specifications:

- Dual-aspect apartment
- Large double bedroom with en suite shower room and built-in double wardrobes
- Second double bedroom and separate guest bathroom
- Modern kitchen with quartz worktops and integrated Smeg appliances
- Open plan kitchen and living space with room for dining table
- Bathroom and en suite fitted with Villeroy & Boch sanitaryware
- French doors from the living area leading out to private terrace

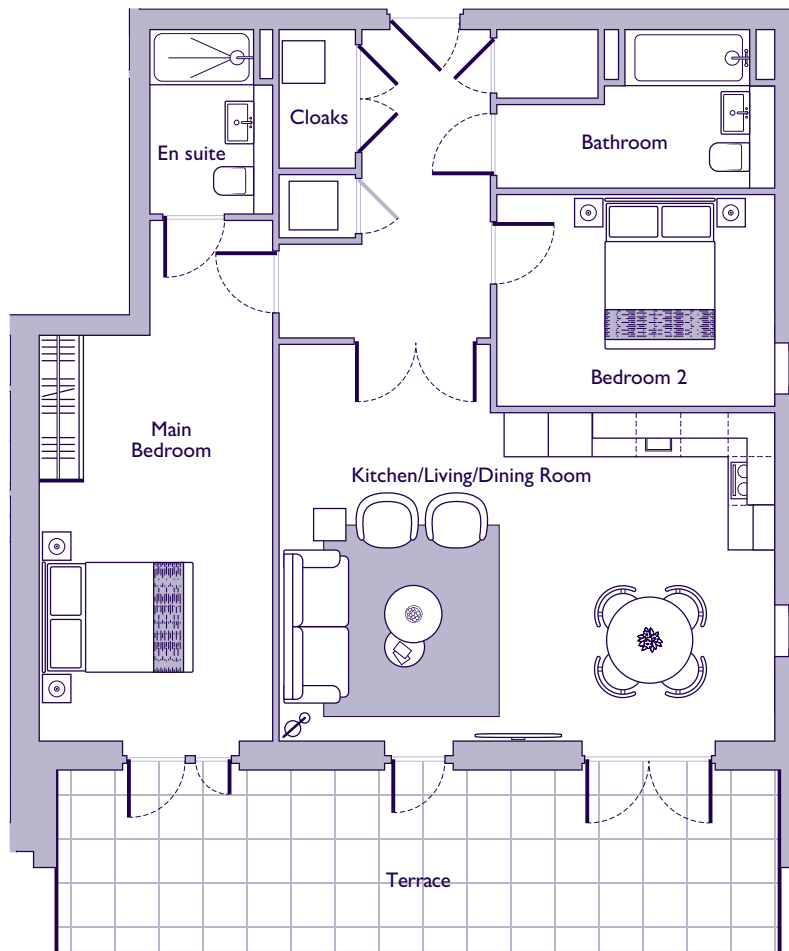
Please see the village brochure and key facts for further information.



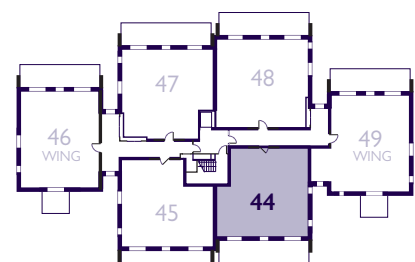
Images for illustration purposes only.

THE LAYOUT

**44 Woodside House. Audley Shiplake Meadows,
Meadow Chase, Reading Road, Henley-on-Thames RG9 3JN**



Internal Measurements	Metric (m)	Imperial (ft)
Kitchen/Living/Dining Room	6.74 x 5.40 max	22'2" x 17'8"
Main Bedroom	7.14 x 3.19 max	23'4" x 10'5"
Bedroom 2	3.78 x 2.91	12'4" x 9'6"



These floor plans are illustrative and for marketing purposes only. Maximum measurements are shown with longer dimension quoted first. Dimensions are quoted for the main area of the room only. Built-in wardrobes not included in the overall room dimensions. Furniture shown to illustrate possible room layouts and not included in sale. Designs vary according to plot. All details should be checked at the Sales Office. July 2024.