

3 LIME TREE COURT TWO BEDROOM APARTMENT

£590,000
(other fees apply)

It can only be Audley.



Centrally positioned within the stunning Inglewood grounds is this sizeable two bedroom apartment at Lime Tree Court. Occupying a favoured top floor position, the property boasts a dual aspect which enjoys views towards Inglewood House and benefits from bright and airy accommodation. The spacious open plan living room benefits from an electric fireplace and Juliet balcony. There is a modern Siematic Kitchen including integrated appliances and two double bedrooms with en suite shower room and integrated wardrobes to the main bedroom. Furthermore, there is a large entrance hall and a separate bathroom.

- Centrally positioned two bedroom apartment
- Views towards Inglewood House
- Two double bedrooms with en suite shower to main
- Spacious open plan living room with Juliet balcony
- SieMatic kitchen with integrated appliances including fridge freezer, dishwasher, electric oven, ceramic halogen hob, microwave oven, and a washer dryer
- Separate bathroom with WC.

Fees

Monthly management fee: £1055.43

Annual ground rent: £500

Bistro credit: £77.96

Council Tax Band: F (West Berkshire)

A deferred management charge applies to this property, please ask the sales team for more information.

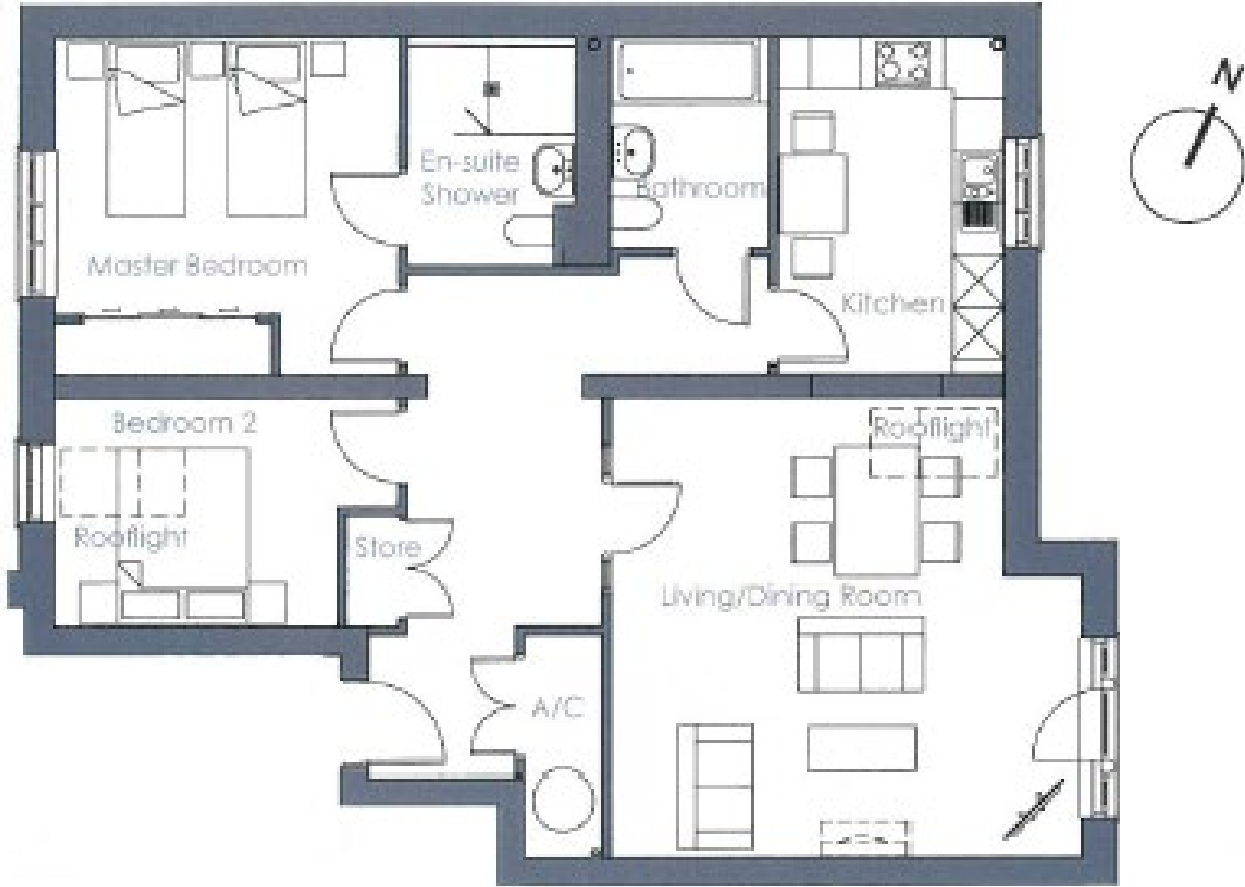
Viewing by appointment with the sales office.

01488 682 100

inglewoodsales@audleyvillages.co.uk



Internal Measurements	Metric (m)	Imperial (ft)
Living room / Dining room	5.36 x 5.24m	17'7" x 17'2"
Kitchen	3.87 x 2.56m	12'8" x 8'5"
Main Bedroom	3.96 x 3.86m	13' x 12'8"
Bedroom two	3.96 x 2.63m	13' x 8'7"



Built in wardrobes in bedrooms have not been included in the overall dimensions. Maximum measurements shown.

Furniture shown to illustrate possible room layouts and not included in sale. May 2024

Score	Energy rating	Current	Potential
92+	A	82 B	82 B
81-91	B		
69-80	C		
55-68	D		
39-54	E		
21-38	F		
1-20	G		

