

9 Lewis Court

9 Lewis Court

Two bedroom apartment

A fabulous two bedroom apartment with east-facing views. The apartment has an open plan kitchen/dining/living room with dual aspect French doors benefiting from east views and a balcony. Located next to the facilities this is a fantastic located apartment.

Property specifications

- East-facing dual aspect
- Open plan kitchen and living/dining room with stunning views
- Main bedroom with fitted wardrobes.
- Fully fitted SieMatic kitchen with Corian worktops and integrated fridge, freezer, oven, microwave and dishwasher
- Ensuite and Main Bathroom
- Lift access

Guide Price £495,000 (other fees apply)

Monthly management fee: £587.66

A deferred management charge applies to this property, please ask the sales team for more information.

Viewing by appointment with the sales office.

01684 438400
ellersliesales@audleyvillages.co.uk

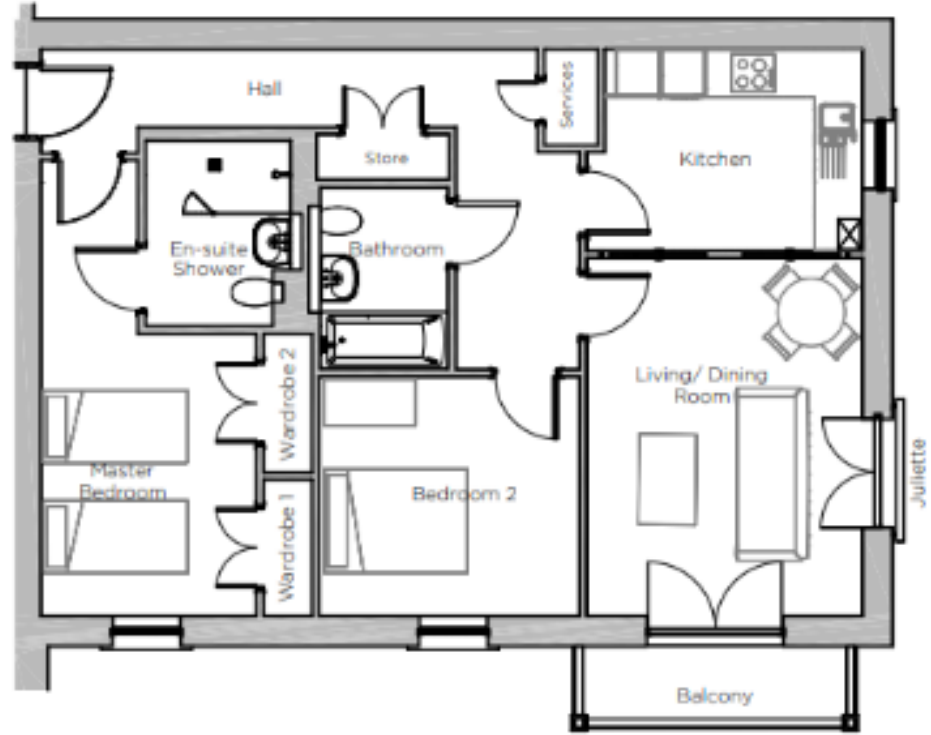


9 Lewis Court

Internal Measurements	Metric (m)	Imperial (ft)
Living/Dining Room	4.68 x 3.73	15.4" x 12'3"
Kitchen	2.73 x 3.73	9.0" x 12'3"
Main Bedroom	3.68 x 3.41	10'3" x 11'2"
Total Sq.Ft:	914	

Built in wardrobes in bedrooms have not been included in the overall dimensions. Maximum measurements shown.

Score	Energy rating	Current	Potential
92+	A		
81-91	B	83 B	83 B
69-80	C		
55-68	D		
39-54	E		
21-38	F		
1-20	G		



Furniture shown to illustrate possible room layouts and not included in sale. Designs vary according to plot and all details should be checked at the Sales office. March 2024.

