

3 Beech Court



3 Beech Court

A recently decorated spacious two-bedroom apartment with new carpets throughout. Accommodation comprises a hallway, fitted kitchen-breakfast room with integrated fridge-freezer, oven, hob and dishwasher – separate utility room with washer dryer. WC/Shower room. Lounge-diner with patio door to garden area, two bedrooms, of which the main bedroom has ensuite WC/Shower room. Parking nearby.

Property specification

- Spacious main bedroom with en suite shower
- Separate kitchen with integrated appliances including fridge, freezer, oven and dishwasher
- Family WC/shower room off hallway
- Spacious double aspect lounge-diner
- Second double bedroom
- Newly decorated and new fitted carpets
- Free parking nearby

£390,000 (other fees apply)

Monthly management fee: £1207,63

Annual ground rent: £200

Council Tax: D

A deferred management charge applies to this property, please ask the sales team for more information.

Viewing by appointment with the sales office.

01892 457 002

willicombesales@audleyvillages.co.uk



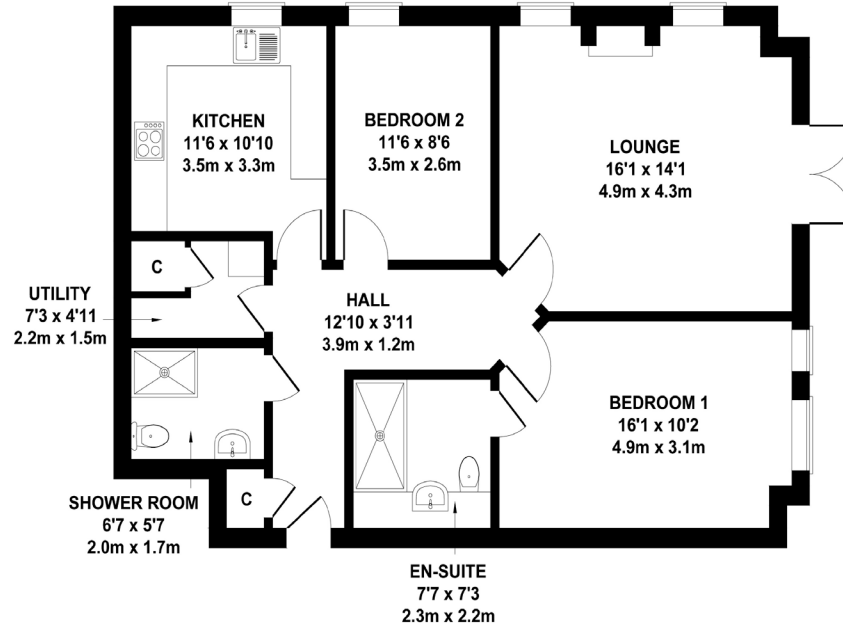
3 Beech Court

Internal Measurements

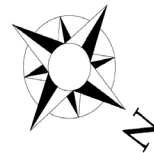
	Metric (m)	Imperial (ft)
Main bedroom	4.9 x 3.1	16'1" x 10'2"
Kitchen	3.5 x 3.3	11'6" x 10'10"
Lounge/diner	7.4 x 4.3	16'1" x 14'1"
Second bedroom	3.5 x 2.6	11'6" x 8'6"
Utility room	2.2 x 1.5	7'3" x 4'11"

Total Sq. Ft: 883

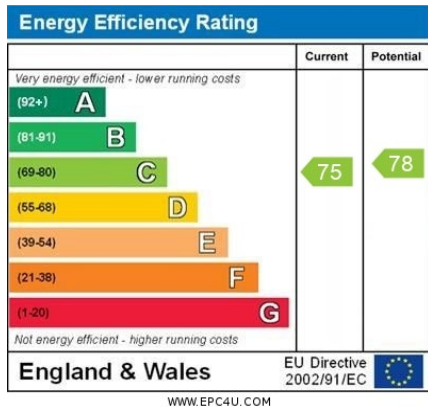
Built in wardrobes in bedrooms have not been included in the overall dimensions. Maximum measurements shown.



APPROX. FLOOR AREA 883 SQ.FT. (82.0 SQ.M.)



Not to Scale. Produced by The Plan Portal 2024
For Illustrative Purposes Only.



Furniture shown to illustrate possible room layouts and not included in sale. Designs vary according to plot and all details should be checked at the Sales office. April 2024

