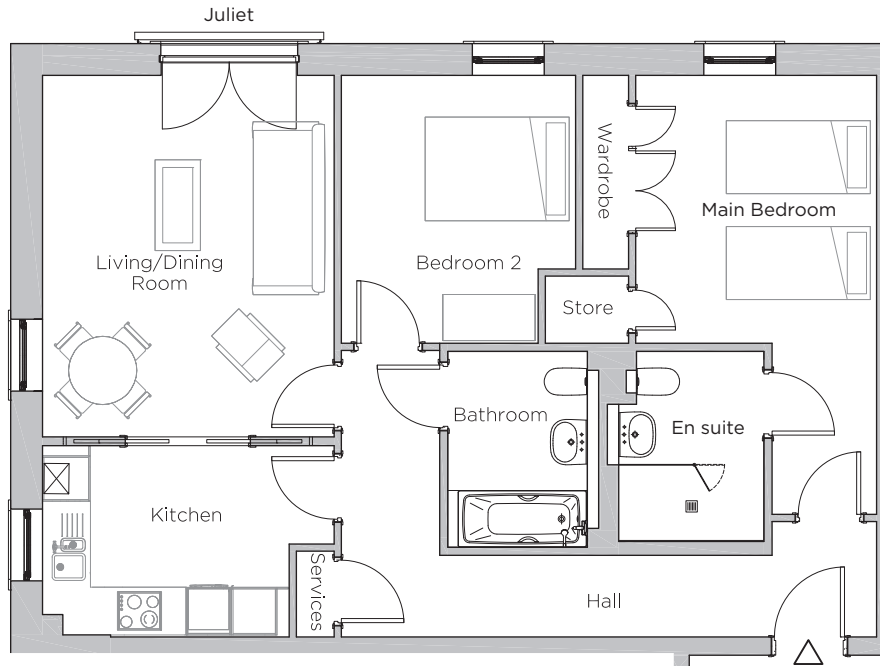
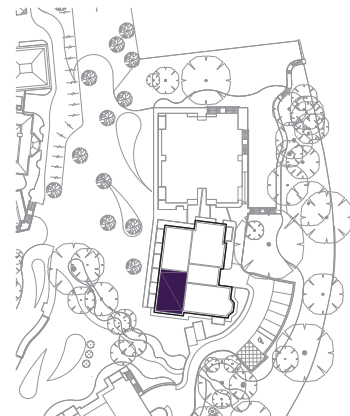


# Audley Ellerslie

14 Austin Court  
Third Floor Apartment  
Plot 74



Internal Measurements	Metric (m)	Imperial (ft)
Living/Dining Room	4.78 x 3.85	15'8" x 12'8"
Kitchen	3.26 x 2.53	10'8" x 8'4"
Main Bedroom	3.54 x 3.18	11'7" x 10'5"
Bedroom 2	3.54 x 3.07	11'7" x 10'1"



Audley Ellerslie  
Abbey Road, Malvern, Worcestershire WR14 3HL  
01684 438 400  
[www.audleyvillages.co.uk](http://www.audleyvillages.co.uk)

These floorplans are illustrative and for marketing purposes only. Maximum measurements are shown. Wardrobes not included in the overall room dimensions. Furniture shown to illustrate possible room layouts and not included in sale. Designs vary according to plot. All details should be checked at the Sales Office.



# Audley Ellerslie

Third floor, two bedroom apartment



## Property highlights

- Dual-aspect apartment
- Large double bedroom with en suite shower room and built-in double wardrobes
- Second double bedroom
- Modern SieMatic kitchen with integrated appliances
- Pocket sliding doors between the kitchen and living/dining room for optional open plan living
- Luxury Villeroy & Boch sanitaryware and Hansgrohe fittings
- Juliet balcony in living room
- Hallway storage
- Views of the landscaped grounds
- East-facing bedroom for morning sun



Audley Ellerslie  
Abbey Road, Malvern, Worcestershire WR14 3HL  
01684 438 400  
[www.audleyvillages.co.uk](http://www.audleyvillages.co.uk)

CGIs & Photos for illustration purposes only

