

Gardeners Cottage



Gardeners Cottage

Two bedroom cottage

This charming two bedroom detached cottage is perfectly located to enjoy views over the beautiful grounds of the Garden Walk..

The main bedroom has a walk-through dressing room and an en suite shower room. There is a modern kitchen with integrated appliances, living and dining rooms, a downstairs shower room and a spacious basement.

Property specifications

- Unique period detached cottage
- Private outdoors terrace area
- Master bedroom with a walk-through dressing room
- Guest bathroom and a downstairs shower room
- Spacious basement
- Off road parking

OIEO £550,000 (other fees apply)

Monthly management fee £1025.02

Annual ground rent £250

Bistro credit: £83.63

Council Tax Band: G

A deferred management charge applies to this property, please ask the sales team for more information.

Viewing by appointment with the sales office.

01622 737 279

motesales@audleyvillages.co.uk



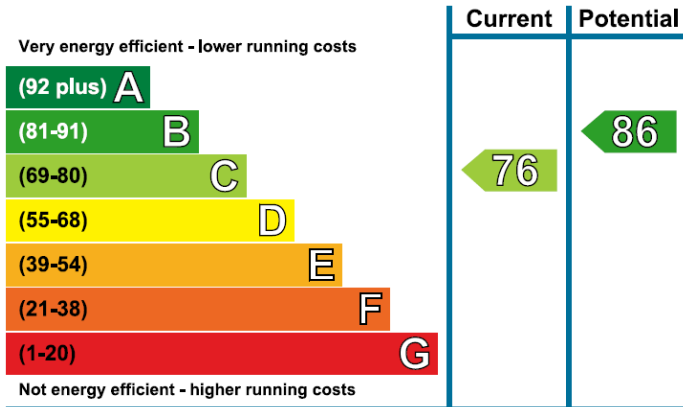
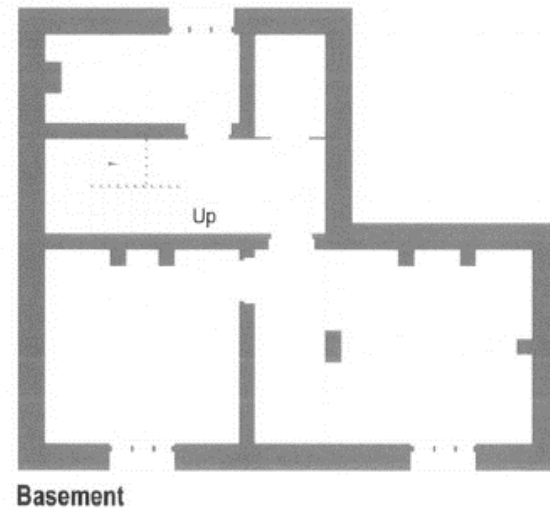
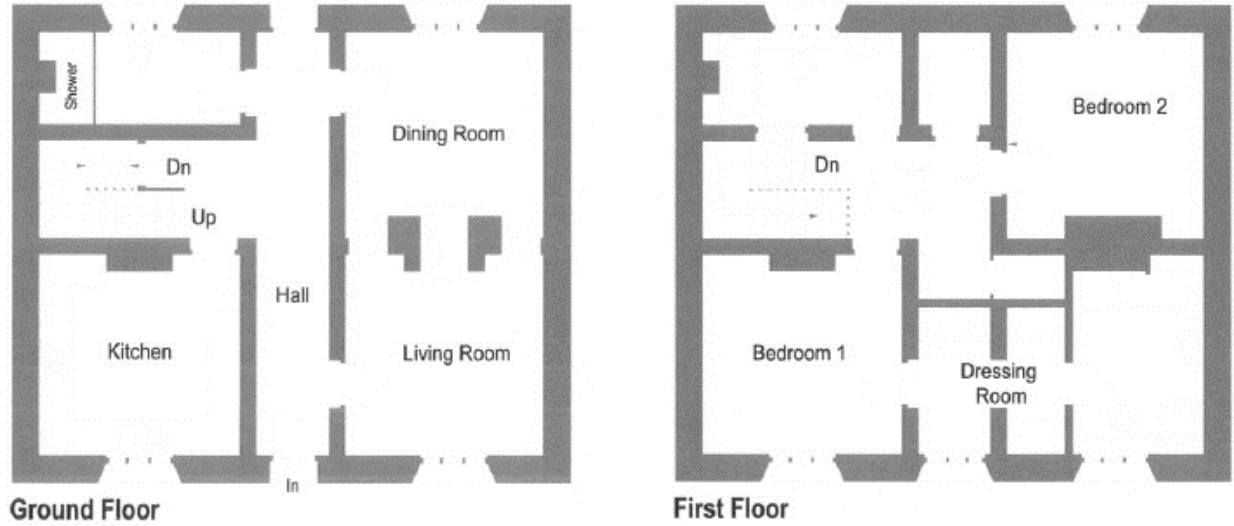
Gardeners Cottage

Internal Measurements

	Metric (m)	Imperial (ft)
Kitchen	3.60 x 3.60	11'8" x 11'8"
Living room	3.55 x 3.55	11'6" x 11'6"
Dining room	3.55 x 3.70	11'6" x 12'1"
Bedroom 1	3.60 x 3.60	11'8" x 11'8"
Bedroom 2	3.60 x 3.70	11'8" x 12'1"
Kitchen	3.60 x 3.60	11'8" x 11'8"

Sq Ft:

Built in wardrobes in bedrooms have not been included in the overall dimensions. Maximum measurements shown.



Furniture shown to illustrate possible room layouts and not included in sale. Designs vary according to plot and all details should be checked at the Sales office.

March 2024

