

15 Southlands Court



15 Southlands Court

Three bedroom apartment

This three bedroom apartment is simply stunning and located in the listed section of the development, benefiting from high ceilings and plenty of character, also providing easy access to all village amenities.

The large living room has magnificent views and a separate modern SieMatic kitchen which benefits from integrated Neff appliances. The property offers three good sized bedrooms, including the main bedroom which is enhanced by fitted wardrobes and an en suite shower room, and a separate guest bathroom.

Property specifications

- Spacious three bedroom apartment
- SieMatic kitchen with integrated Neff appliances
- Main bedroom with an en suite shower room
- Two further double bedrooms
- Car parking available - issued on a permit basis
- Close to the central village amenities

Guide Price £825,000 (other fees apply)

Monthly management fee £553.89

Ground rent: £500

Council Tax Band: TBC

Viewing by appointment with the sales office.

01684 438400

ellersliesales@audleyvillages.co.uk



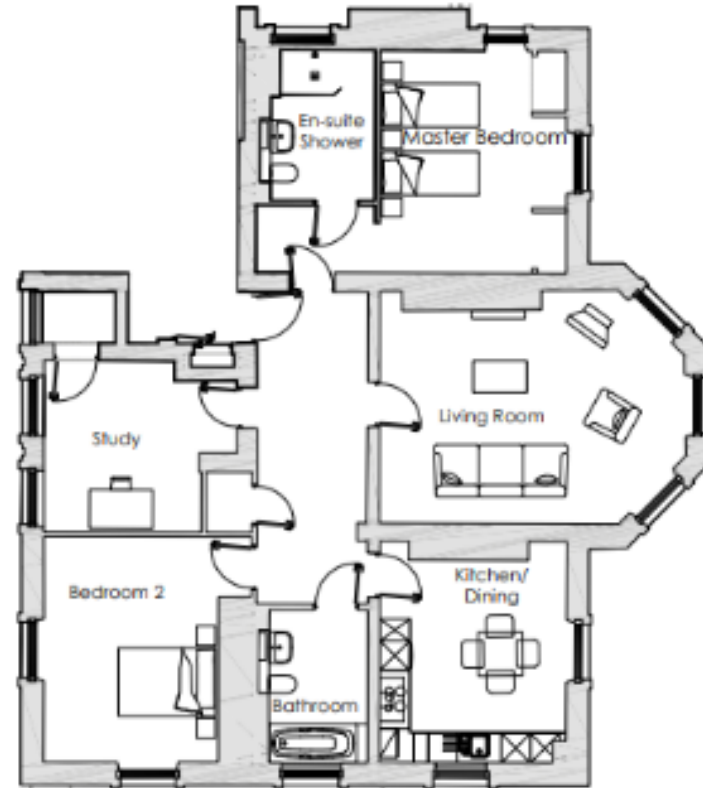
15 Southlands Court

Internal Measurements

	Metric (m)	Imperial (ft)
Living/Dining Room	6.31 x 4.79	20'8" x 15'9"
Kitchen	4.17 x 3.83	13'8" x 12'7"
Main bedroom	4.57 x 3.84	15" x 12'7"
Bedroom 2	4.63 x 3.59	15'2" x 11'9"
Bedroom 3/ study	3.51 x 3.25	11'6" x 10'8"

Total Sq. Ft. 1531

Built in wardrobes in bedrooms have not been included in the overall dimensions. Maximum measurements shown.



Score	Energy rating	Current	Potential
92+	A		
81-91	B		
69-80	C	80 c	80 c
55-68	D		
39-54	E		
21-38	F		
1-20	G		

These pages are intended for marketing purposes only. Designs vary according to plot and all details should be checked at the Sales office. March 2024

