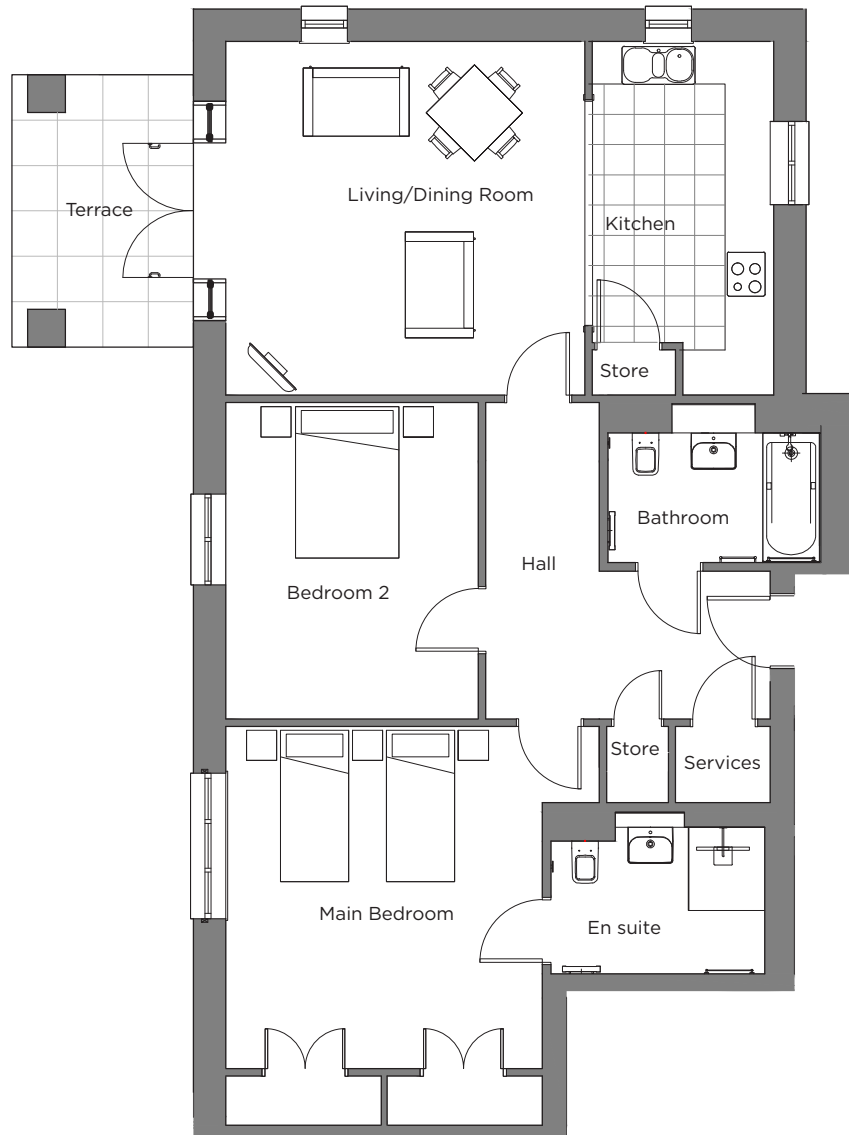


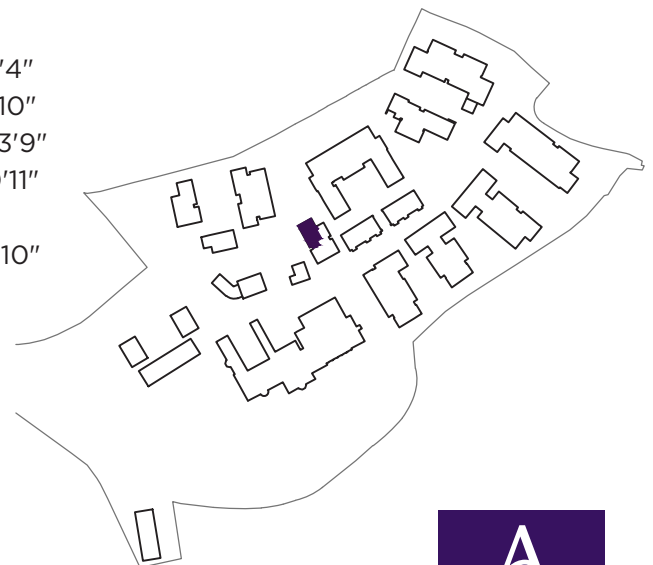
Audley Scarcroft Park

Fox House, Block N
Ground Floor Apartment
Plot N01



Internal Measurements

| | Metric (m) | Imperial (ft) |
|--------------------|-------------|----------------|
| Living/Dining Room | 4.70 x 4.68 | 15'7" x 15'4" |
| Kitchen | 4.68 x 2.40 | 15'4" x 7'10" |
| Main Bedroom | 4.53 x 4.19 | 14'10" x 13'9" |
| Bedroom 2 | 4.19 x 3.34 | 13'9" x 10'11" |
| Terrace (Approx.) | 3.60 x 2.40 | 11'10" x 7'10" |



Audley Scarcroft Park,
Scarcroft Estate, Leeds,
West Yorkshire LS14 3HS
0800 093 8181
www.audleyvillages.co.uk

These floor plans are illustrative and for marketing purposes only. Maximum measurements are shown with longer dimension quoted first. Dimensions are quoted for the main area of the room only. Built-in wardrobes not included in the overall room dimensions. Furniture shown to illustrate possible room layouts and not included in sale. Designs vary according to plot. All details should be checked at the Sales Office.

Audley Scarcroft Park

2 bedroom, ground floor apartment



Property highlights

- Triple-aspect apartment
- Large double bedroom with en suite shower room and built-in double wardrobes
- Second double bedroom
- Modern Nobilia kitchen and integrated appliances
- Open plan kitchen and living space with room for dining table
- Bathroom and en suite fitted with elegant white Geberit sanitaryware
- West-facing terrace accessible from living room
- Hallway storage
- Membership to the Audley Club



Audley Scarcroft Park,
Scarcroft Estate, Leeds,
West Yorkshire LS14 3HS
0800 093 8181
www.audleyvillages.co.uk

CGIs & Photos for illustration purposes only

