

4 Rydinghurst House



4 Rydinghurst House

2 bedroom apartment

A unique two-bedroom, ground floor apartment in the restored Rydinghurst House, accessed via its own front door directly from the landscaped grounds.

The main bedroom has double wardrobes, en suite shower room and access to a secluded east-facing terrace.

The apartment has a fully equipped open plan kitchen/living room with Corian worktops with integrated SieMatic appliances including fridge/freezer, oven, hob, dishwasher and washing machine with French doors opening to a west-facing terrace.

Property specifications

- Unique property in the restored Rydinghurst House
- Open plan living room/kitchen with doors leading to a terrace
- Additional terrace from the master bedroom
- Luxury Villeroy & Boch en suite shower room
- Double wardrobes in the master bedroom
- Guest bathroom
- Small terrace to 2nd bedroom

Guide Price £750,000 (other fees apply)

Monthly management fee £1130.81

Bistro credit: 69.65

A deferred management charge applies to this property, please ask the sales team for more information.

Council Tax band: E

Viewing by appointment with the sales office.

01494 876 173

chalfontsales@audleyvillages.co.uk



4 Rydinghurst House

Internal Measurements

Living Room/
kitchen/ dining
room

Metric (m)

Imperial (ft)

6.22 x 4.38 20'5" x 14'4"

Main bedroom

4.62 x 3.00

15'2" x 9'10"

Bedroom 2

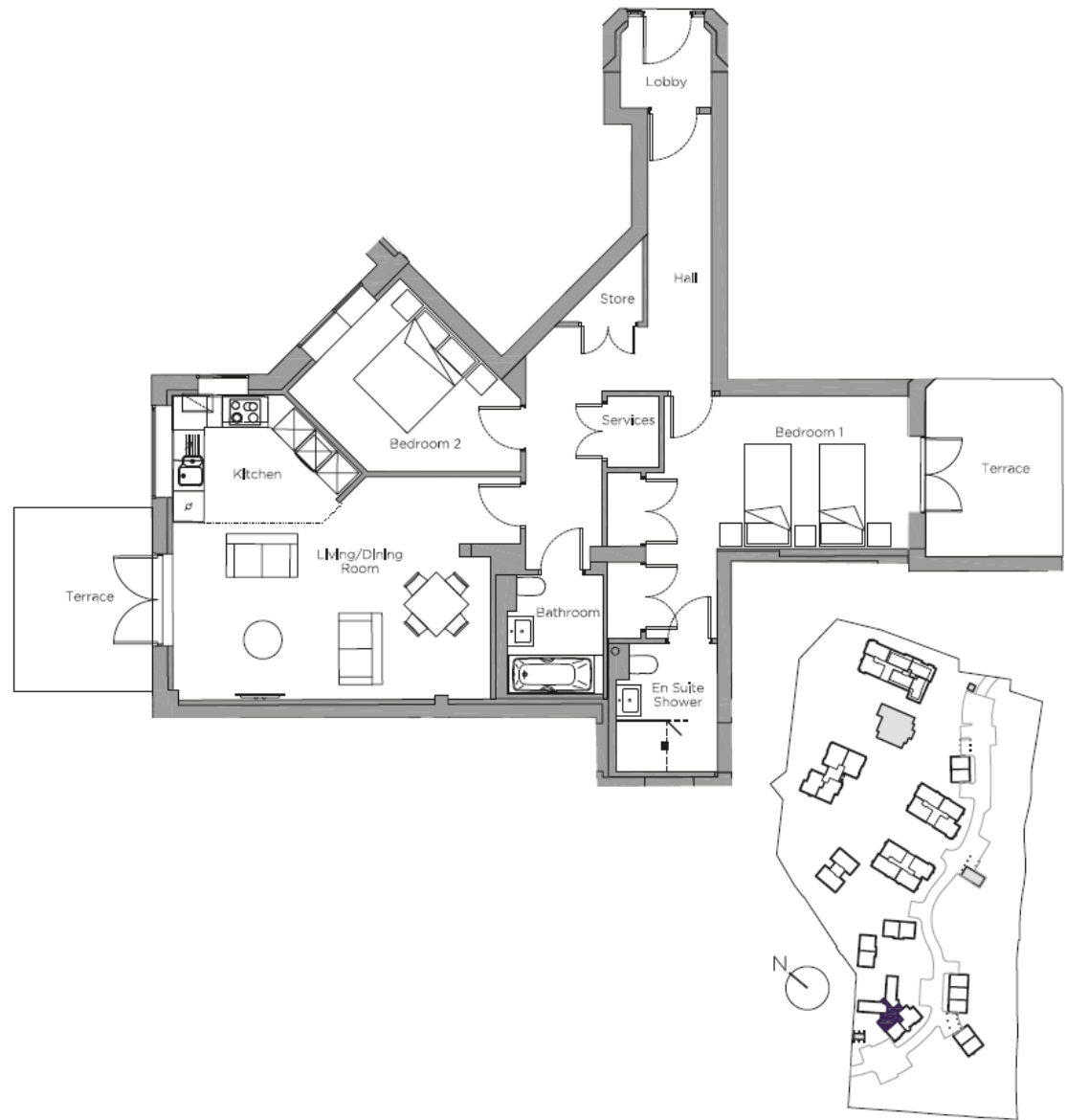
3.13 x 2.23

10'3" x 7'4"

Total sq. ft 1051

Built in wardrobes in bedrooms have not been included in the overall dimensions. Maximum measurements shown.

Score	Energy rating	Current	Potential
92+	A		
81-91	B		86 B
69-80	C	76 C	
55-68	D		
39-54	E		
21-38	F		
1-20	G		



Furniture shown to illustrate possible room layouts and not included in sale. Designs vary according to plot and all details should be checked at the Sales office. October 2023

