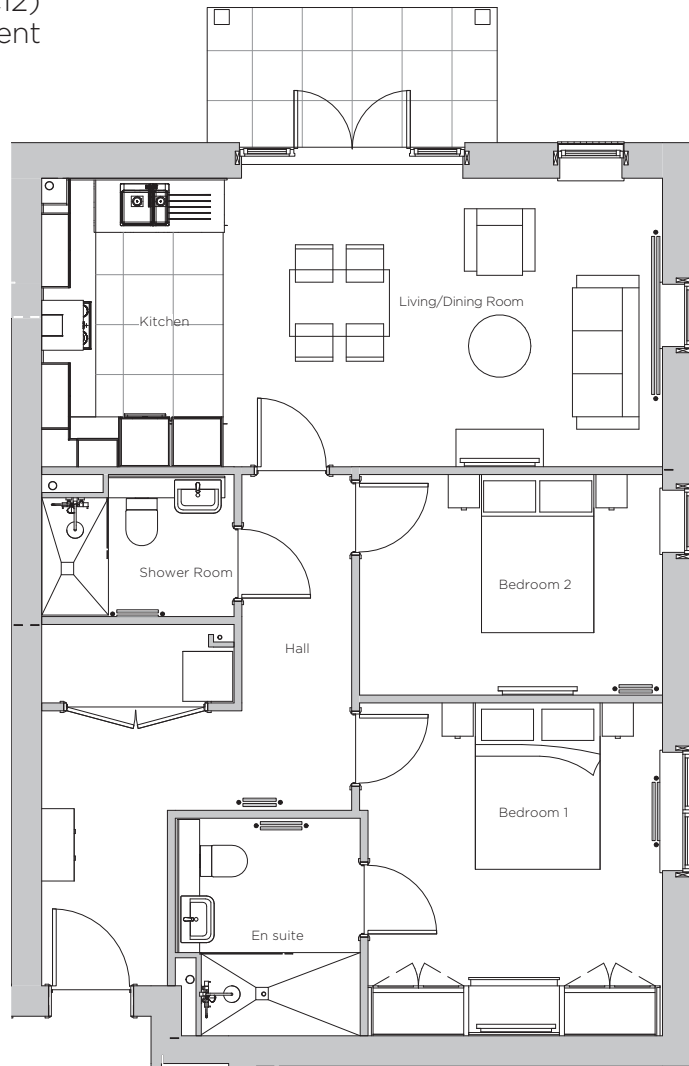
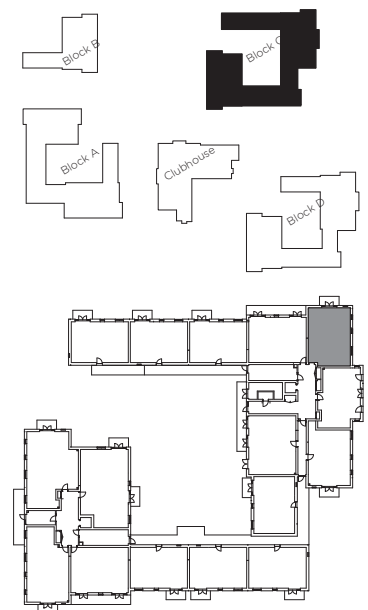


# Audley Wycliffe Park

17 Watercroft Place (C12)  
Ground Floor Apartment  
Plot 71



Internal Measurements	Metric (m)	Imperial (ft)
Bedroom 1	4.00 x 3.54	13'1" x 11'7"
Bedroom 2	2.65 x 3.4	8'8" x 11'11"
Kitchen	3.47 x 2.20	11'4" x 7'3"
Living/Dining Room	3.47 x 5.26	11'4" x 17'3"
Services	0.94 x 2.31	3'1" x 7'7"
Terrace	1.60 x 3.32	5'3" x 10'11"



Audley Wycliffe Park  
Bigmore Lane, Horsleys Green,  
Buckinghamshire HP14 3XL  
01494 324 966  
[www.audleyvillages.co.uk](http://www.audleyvillages.co.uk)

These floor plans are illustrative and for marketing purposes only. Furniture shown to illustrate possible room layouts and not included within the sale. Designs vary according to plot. All details should be checked at the Sales Office.

A: 10 November 2021 C: 220501



# Audley Wycliffe Park

2 bedroom, ground floor apartment



## Property highlights

- Dual-aspect apartment located on the ground floor
- Open plan kitchen/living room with dining area
- Private terrace accessible from living room
- Integrated Nobilia kitchen with Neff appliances
- Hallway storage
- Main bedroom with built-in wardrobes and en suite shower room
- Two double bedrooms
- En suite and guest shower room fitted with Villeroy & Boch sanitaryware
- Carpeted and decorated throughout
- Membership to Audley Club



Audley Wycliffe Park  
Bigmore Lane, Horsleys Green,  
Buckinghamshire HP14 3XL  
01494 324 966  
[www.audleyvillages.co.uk](http://www.audleyvillages.co.uk)

CGIs & Photos for illustration purposes only

