

42 Chamberlain Place



42 Chamberlain Place

Two bedroom apartment

This charming apartment is perfectly located on the third floor of Chamberlain Place. The main bedroom is well-appointed and offers fitted wardrobes and an en suite shower room. There is also a modern SieMatic kitchen with integrated appliances including oven, hob, dishwasher and washing machine. In addition, the apartment benefits from a cloakroom with Villeroy & Boch sanitaryware. It also offers spacious living/dining room with access to the balcony.

Property specifications

- Third floor apartment with private balcony
- Main bedroom with an en suite shower room
- Good sized second bedroom
- SieMatic kitchen with integrated appliances
- Spacious living / Dining room that offers access to the balcony
- Property accessed by a serviced lift
- Short walk to the main house

Guide Price £325,000 (other fees apply)

Monthly management fee £608.64

Council Tax Band: D

Bistro Credit: £73.84

A deferred management charge applies to this property, please ask the sales team for more information.

Viewing by appointment with the sales office.

0121 293 1093

stgeorgesales@audleyvillages.co.uk



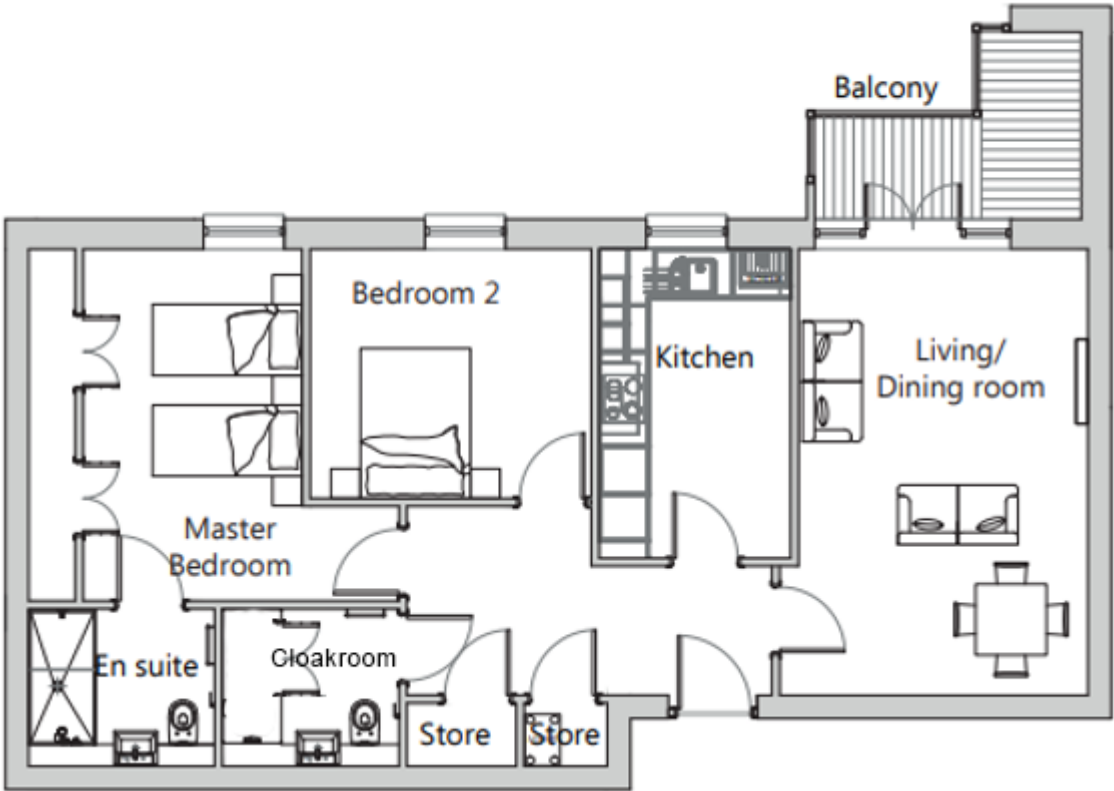
42 Chamberlain Place

Internal Measurements	Metric (m)	Imperial (ft)
Living/Dining Room	5.65 x 3.91	18'6" x 12'10"
Kitchen	3.92 x 2.43	12'10" x 7'11"
Main Bedroom	4.70 x 4.45	15'5" x 14'7"
Bedroom 2	3.16 x 3.57	10'3" x 11'7"

Total Sq.Ft 899

Built in wardrobes in bedrooms have not been included in the overall dimensions. Maximum measurements shown.

Score	Energy rating	Current	Potential
92+	A		
81-91	B	89 B	89 B
69-80	C		
55-68	D		
39-54	E		
21-38	F		
1-20	G		



Furniture shown to illustrate possible room layouts and not included in sale. Designs vary according to plot and all details should be checked at the Sales office. March 2024

