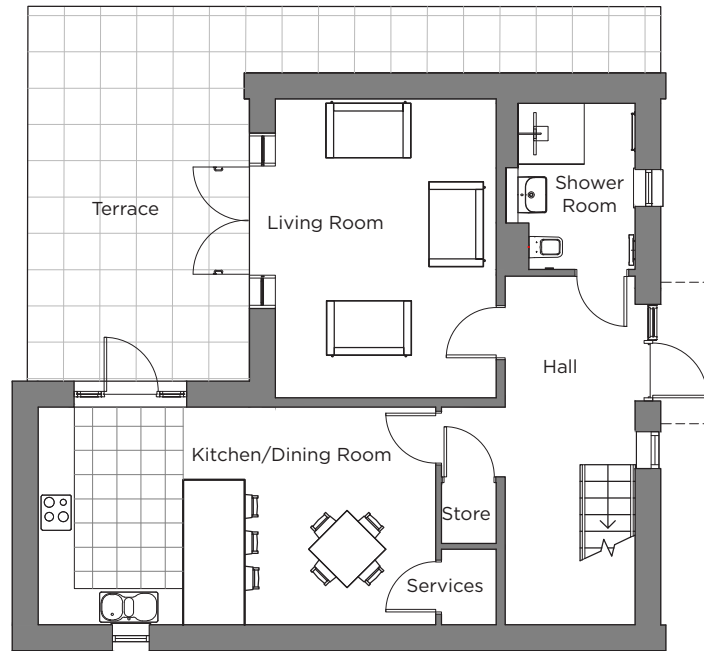
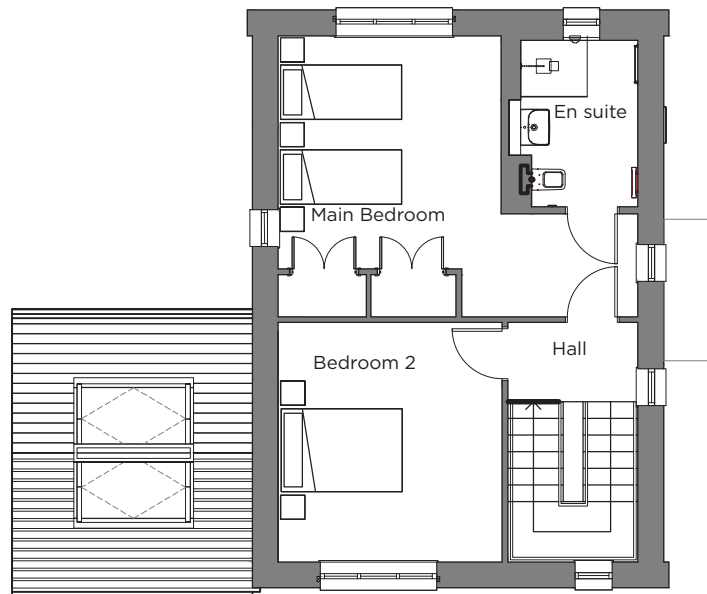


# Audley Scarcroft Park

Block O  
Cottage  
Plot 001



Ground Floor



First Floor

## Internal Measurements

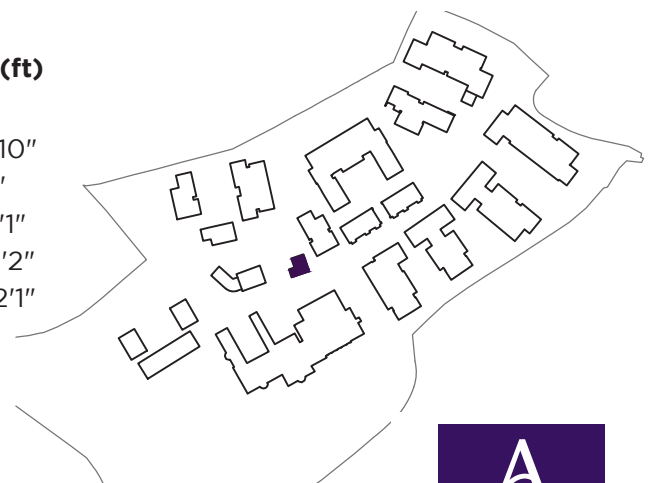
## Metric (m)

## Imperial (ft)

Kitchen/Dining Room	6.58 x 3.60	21'7" x 11'10"
Living Room	4.95 x 3.66	16'3" x 12'
Main Bedroom	3.86 x 3.69	12'8" x 12'1"
Bedroom 2	3.96 x 3.70	13'0" x 12'2"
Terrace (Approx.)	6.20 x 3.67	20'4" x 12'1"

Audley Scarcroft Park,  
Scarcroft Estate, Leeds,  
West Yorkshire LS14 3HS  
0800 093 8181  
[www.audleyvillages.co.uk](http://www.audleyvillages.co.uk)

These floor plans are illustrative and for marketing purposes only. Maximum measurements are shown with longer dimension quoted first. Dimensions are quoted for the main area of the room only. Built-in wardrobes not included in the overall room dimensions. Furniture shown to illustrate possible room layouts and not included in sale. Designs vary according to plot. All details should be checked at the Sales Office.



# Audley Scarcroft Park

2 bedroom cottage



## Property highlights

- Fully detached, triple-aspect property split over two floors
- Large double bedroom with en suite shower room and built-in double wardrobes
- Second double bedroom
- Modern Nobilia kitchen with breakfast bar and integrated appliances
- Shower room and en suite fitted with elegant white Geberit sanitaryware
- French doors from the living room and kitchen leading out to a dual-aspect terrace
- Ceiling window above kitchen for additional sunlight
- Close to main house and Audley Club facilities

Audley Scarcroft Park,  
Scarcroft Estate, Leeds,  
West Yorkshire LS14 3HS  
0800 093 8181  
[www.audleyvillages.co.uk](http://www.audleyvillages.co.uk)

CGIs & Photos for illustration purposes only

