

TWO BEDROOM, FIRST FLOOR APARTMENT

**34 Beckings Court, Plot 116. Audley Wycliffe Park,
Bigmore Lane, Horsleys Green, Buckinghamshire HP14 3XL
01494 324 966**

Property specifications:

- Large open plan living room and kitchen
- Kitchen is fully fitted with integrated appliances and breakfast bar
- Private terrace accessible from the living room
- Two double bedrooms
- Guest bathroom
- Main bedroom has fitted wardrobes and en suite shower room
- Hallway storage
- Audley Club membership

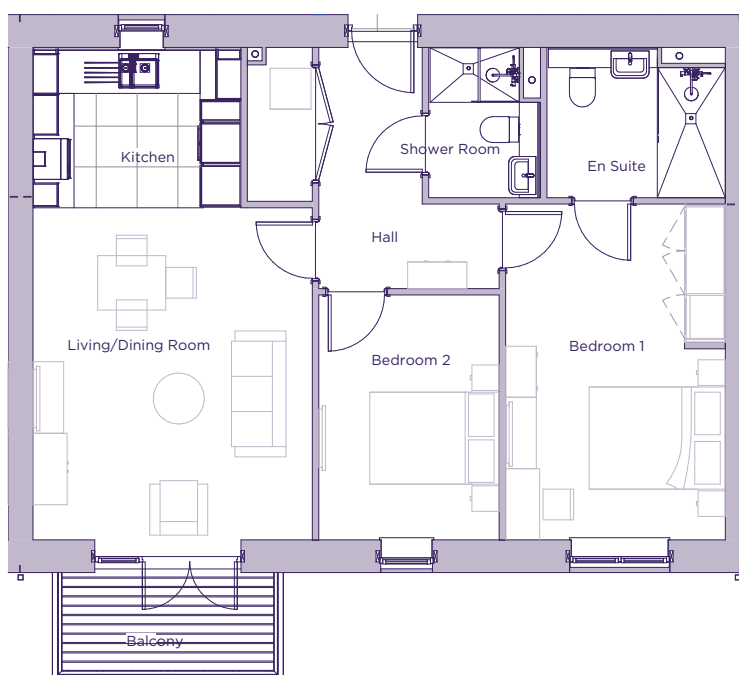
Please see the village brochure and key facts for further information.



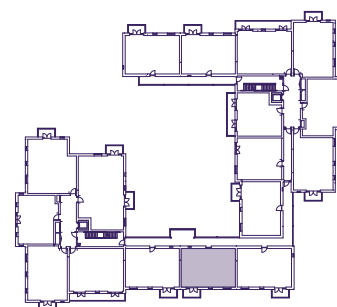
Images for illustration purposes only.

THE LAYOUT

**34 Beckings Court, Plot 116. Audley Wycliffe Park,
Bigmore Lane, Horsleys Green, Buckinghamshire HP14 3XL**



Internal Measurements	Metric (m)	Imperial (ft)
Bedroom 1	4.93 x 3.23	16'2" x 10'7"
Bedroom 2	3.62 x 2.65	11'10" x 8'8"
Kitchen	2.36 x 3.09	7'9" x 10'2"
Living/dining room	4.87 x 4.14	16'0" x 13'7"
Services	2.27 x 0.96	7'5" x 3'2"
Terrace	1.59 x 3.39	5'2" x 11'2"



These floor plans are illustrative and for marketing purposes only. Maximum measurements are shown with longer dimension quoted first. Dimensions are quoted for the main area of the room only. Built-in wardrobes not included in the overall room dimensions. Furniture shown to illustrate possible room layouts and not included in sale. Designs vary according to plot. All details should be checked at the Sales Office. November 2021.