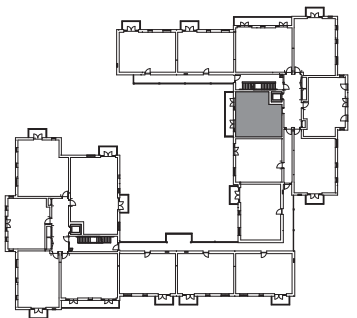
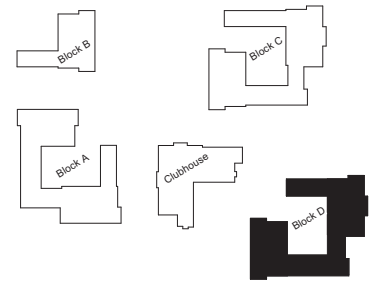
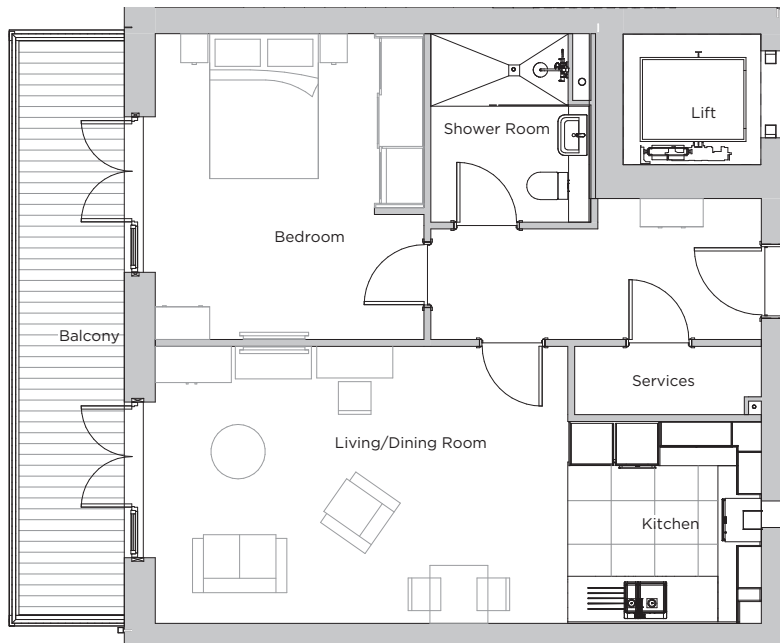


# Audley Wycliffe Park

30 Beckings Court (D30)  
 First Floor Apartment  
 Plot 129



## Internal Measurements

	Metric (m)	Imperial (ft)
Bedroom 1	4.21 x 3.71	13'10" x 12'2"
Kitchen	2.78 x 2.67	9'2" x 8'9"
Living/Dining Room	3.82 x 5.69	12'6" x 18'8"
Services	0.94 x 2.57	3'1" x 8'5"
Terrace	8.03 x 1.50	26'4" x 4'11"

Audley Wycliffe Park  
 Bigmore Lane, Horsleys Green,  
 Buckinghamshire HP14 3XL  
 01494 324 966  
[www.audleyvillages.co.uk](http://www.audleyvillages.co.uk)

These floor plans are illustrative and for marketing purposes only. Furniture shown to illustrate possible room layouts and not included within the sale. Designs vary according to plot. All details should be checked at the Sales Office.

A: 10 November 2021 C: 211126



# Audley Wycliffe Park

1 bedroom, first floor apartment



## Property highlights

- Open plan kitchen and living area
- Large east-facing private terrace accessed from both the bedroom and living room
- Fitted Nobilia handle less kitchen with Neff appliances
- Bedroom has fitted wardrobes
- First floor with lift access
- Hallway storage
- Carpeted and decorated throughout
- Membership to the Audley Club



Audley Wycliffe Park  
Bigmore Lane, Horsleys Green,  
Buckinghamshire HP14 3XL  
01494 324 966  
[www.audleyvillages.co.uk](http://www.audleyvillages.co.uk)

CGIs & Photos for illustration purposes only

