

7 Robinson Court



7 Robinson Court

Two-bedroom first floor apartment

Located on the first floor, this spacious apartment has a dual aspect living/dining room with French doors leading onto a balcony.

The modern Siematic kitchen is fully fitted with integrated appliances. The main bedroom has built in wardrobes and an en suite shower room. There is a second double bedroom and a part tiled 3-piece guest bathroom suite.

Property specifications

- Dual aspect living/dining room with access to terrace
- Separate guest bathroom
- Electric underfloor heating
- Stylish kitchen with integrated appliances
- Large main bedroom with fitted wardrobes and en suite shower room
- Spacious hallway with storage cupboard.
- Recently redecorated throughout
- Centrally located within the village
- Allocated parking space

£385,000 (other fees apply)

Monthly management fee £974.96

Annual ground rent £250

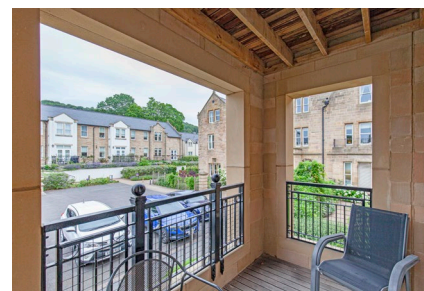
Bistro Credit £88.45

Council Tax Band: D

Viewing by appointment with the sales office.

01629 733 337

stelphinssales@audleyvillages.co.uk



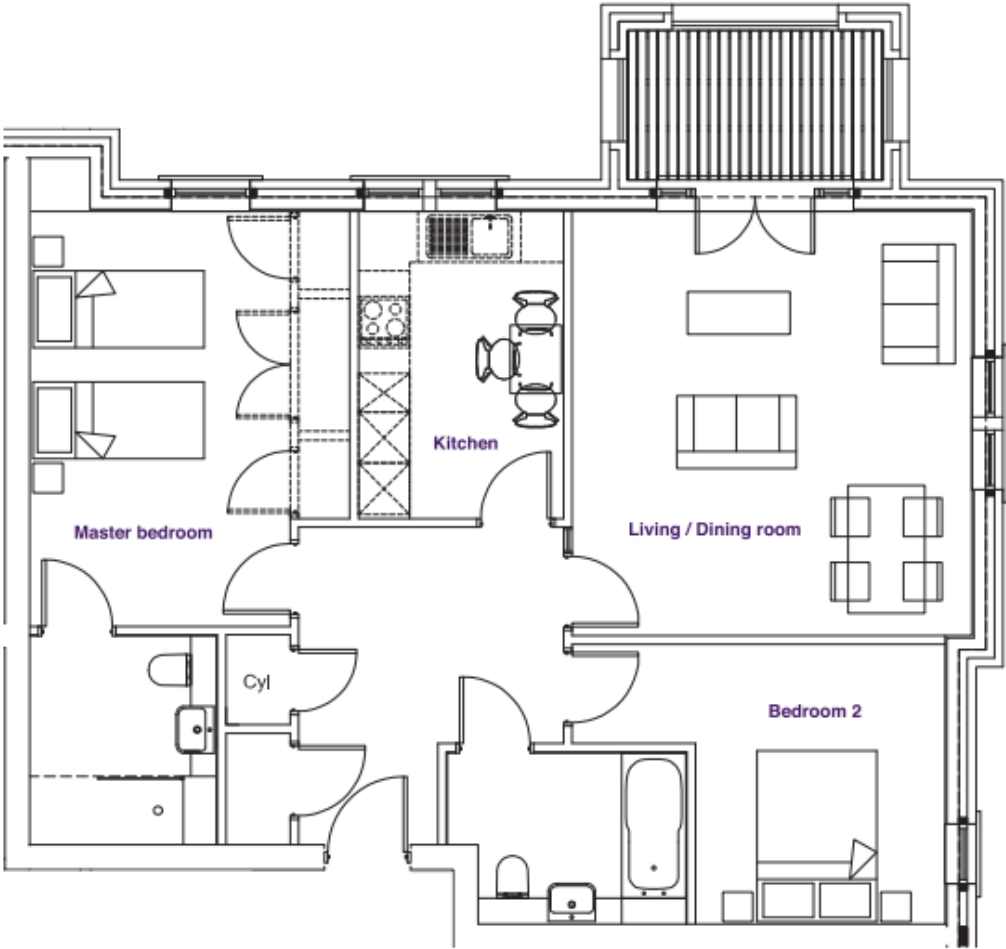
7 Robinson Court

Internal Measurements	Metric (m)	Imperial (ft)
Living/Dining Room	4.70 x 4.95	15'5" x 16'2"
Kitchen	2.40 x 3.60	7'10" x 11'9"
Main Bedroom	3.75 x 4.95	15'5" x 16'2"
Bedroom 2	2.95 x 3.30	9'8" x 10'9"

Total Sq. Ft: 936

Built in wardrobes in bedrooms have not been included in the overall dimensions. Maximum measurements shown.

Score	Energy rating	Current	Potential
92+	A		
81-91	B	88 B	88 B
69-80	C		
55-68	D		
39-54	E		
21-38	F		
1-20	G		



Furniture shown to illustrate possible room layouts and is not included in the sale. Designs vary according to plot and all details should be checked at the Sales office. March 2024

