



Luscombe Maye

Since 1873

Flete House, Ermington

Guide Price £95,000

🛏️ 1 🚿 1 🚽 1



Flete House is set amidst unspoiled rolling parkland, dotted with magnificent oaks and other centuries-old trees, overlooking the serene Erme Valley as the river winds gently towards its estuary just a few miles downstream. From the terraces, there are breathtaking views across Ermington and Dartmoor. This historic estate was the family seat of the Mildmays, with the earliest sections dating back to Elizabethan times. In the 1870s, the house was significantly expanded by the renowned architect Norman Shaw.

Set within 12 acres of beautifully landscaped grounds, the house and stables have been meticulously restored and refurbished to create 29 self-contained apartments. Flete House offers a relaxed lifestyle in a stylish and tranquil setting, suitable either as a main residence or a 'lock-up-and-leave' home for those with busy or international lives.

Mothecombe Beach – 4 miles

Plymouth – 10 miles

Salcombe – 14 miles

Exeter – 36 miles

Nestled in the rolling hills of the South Hams in Devon, the estate lies just a couple of miles from the picturesque Georgian town of Modbury and within easy reach of the vibrant waterfront city of Plymouth.

Apartment 17 occupies the second floor, accessible via level entry or the main entrance, with stairs equipped with a stair lift. The apartment is bright and spacious, offering superb views across the historic estate and surrounding countryside. The accommodation comprises:

Entrance hall with storage

Fully fitted kitchen with integrated appliances

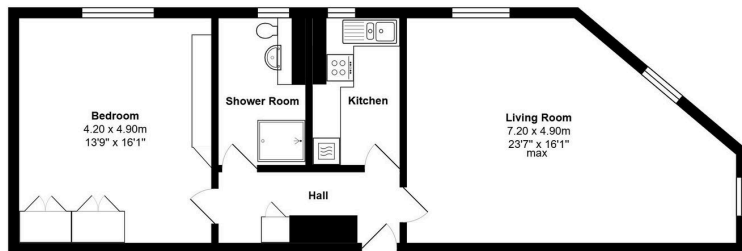
Dual-aspect lounge/dining room with open views to Dartmoor

Fitted bathroom with shower

Large double bedroom with fitted wardrobes

This apartment is ideal as either a principal home or a secondary residence.





Apartment 17 Flete House, Ermington
Total Area: 71.6 m² ... 770 ft²
All measurements are approximate and for display purposes only

- One Bedroom apartment set within magnificent grade I listed country house
- Large living room with lovely views
- Twelve acres of manicured grounds
- Allocated parking
- 24 hour on site staffing
- Kitchen with integrated appliances
- Countryside walks on the doorstep and walking distance to the beach
- Area of outstanding natural beauty
- Ideal permanent home or lock up and leave
- No onward chain

