

TWO/THREE BEDROOM, GROUND FLOOR APARTMENT

**5 Cunliffe Court, Plot 52. Audley Sunningdale Park,
Silwood Road, Ascot, Berkshire SL5 0QB
01344 859 239**

Property specifications:

- 2 bedroom, ground floor apartment
- Open plan kitchen and living space
- Separate dining room
- Main double bedroom with en suite shower room
- Additional guest bathroom
- Luxury Villeroy & Boch sanitaryware and Hansgrohe fittings
- Walk-in wardrobe
- East-facing terrace accessible from the living room
- Carpeted and decorated throughout

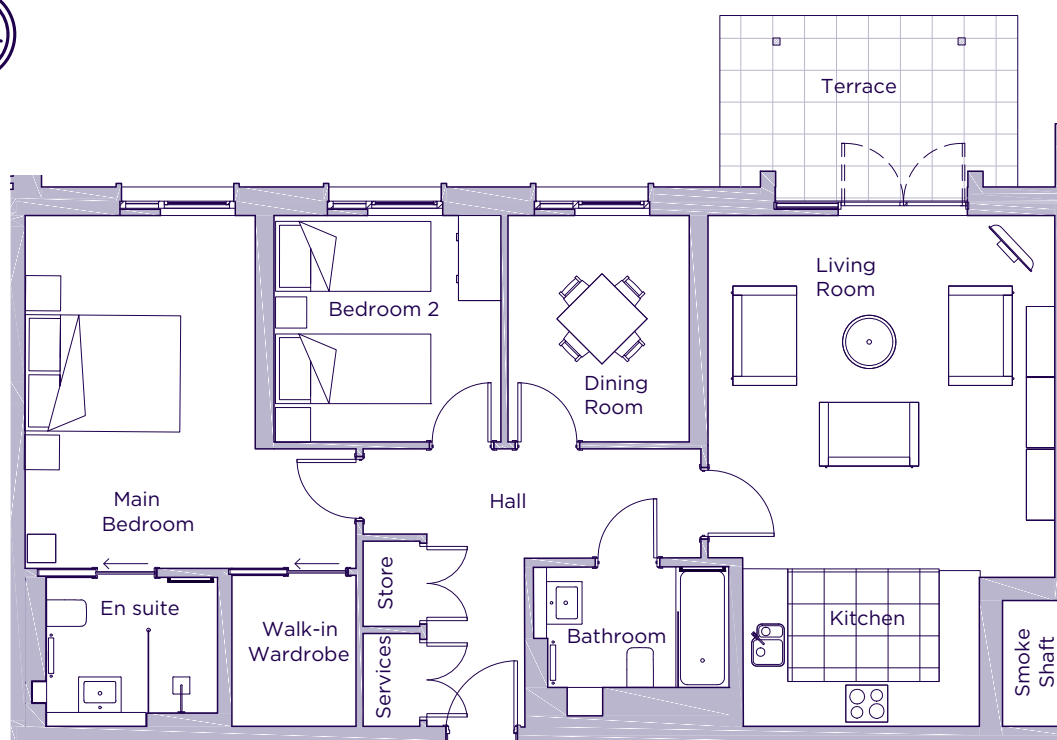
Please see the village brochure and key facts for further information.



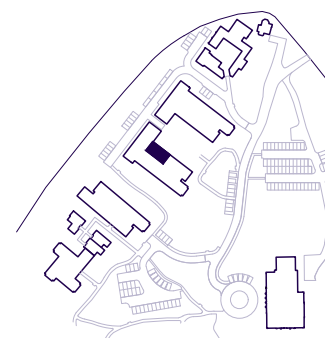
Images for illustration purposes only.

THE LAYOUT

**5 Cunliffe Court, Plot 52. Audley Sunningdale Park,
Silwood Road, Ascot, Berkshire SL5 0QB**



Internal Measurements	Metric (m)	Imperial (ft)
Living Room	4.90 x 4.90	16'1" x 16'1"
Dining Room	3.20 x 2.55	10'6" x 8'5"
Kitchen	3.35 x 2.25	10'11" x 7'3"
Main Bedroom	5.00 x 3.25	16'4" x 10'8"
Bedroom 2	3.20 x 3.20	10'6" x 10'6"
Terrace (approx.)	4.20 x 2.40	13'9" x 7'8"



These floor plans are illustrative and for marketing purposes only. Maximum measurements are shown with longer dimension quoted first. Dimensions are quoted for the main area of the room only. Built-in wardrobes not included in the overall room dimensions. Furniture shown to illustrate possible room layouts and not included in sale. Designs vary according to plot. All details should be checked at the Sales Office. June 2021.