

ONE BEDROOM, FIRST FLOOR APARTMENT

**Flat 3 Scarcroft Lodge, 10 Tennant Square , Plot D04. Audley Scarcroft Park,
Scarcroft Estate, Leeds, West Yorkshire LS14 3HS
0800 093 8181**

Property specifications:

- Located in the restored period building
- Large double bedroom with built-in wardrobes
- Dual-aspect, open plan kitchen and living space with room for dining table
- Hallway storage
- Bathroom fitted with elegant white Geberit sanitaryware
- Located in the main house for easy access to the facilities
- Lift access
- Membership to the Audley Club

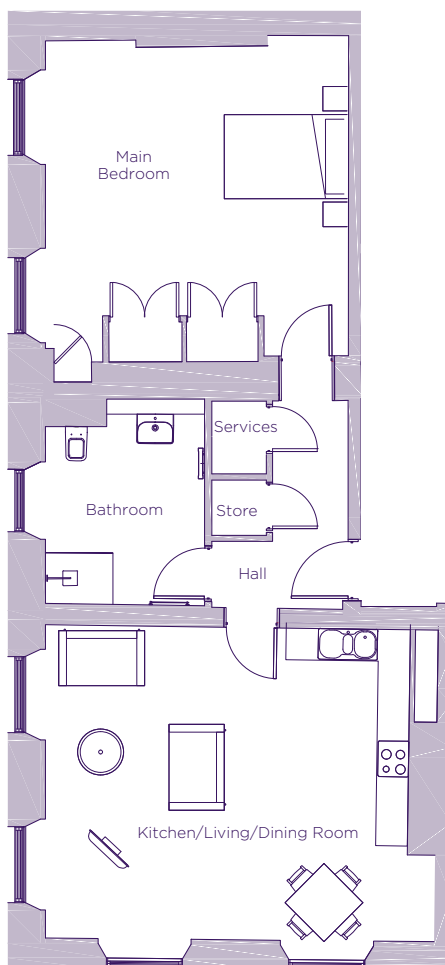
Please see the village brochure and key facts for further information.



Images for illustration purposes only.

THE LAYOUT

Flat 3 Scarcroft Lodge, 10 Tennant Square , Plot D04. Audley Scarcroft Park, Scarcroft Estate, Leeds, West Yorkshire LS14 3HS



Internal Measurements	Metric (m)	Imperial (ft)
Kitchen/Living/Dining Room	6.34 x 5.11	20'10" x 16'9"
Main Bedroom	4.98 x 4.40	16'4" x 14'5"



These floor plans are illustrative and for marketing purposes only. Maximum measurements are shown with longer dimension quoted first. Dimensions are quoted for the main area of the room only. Built-in wardrobes not included in the overall room dimensions. Furniture shown to illustrate possible room layouts and not included in sale. Designs vary according to plot. All details should be checked at the Sales Office. July 2022.