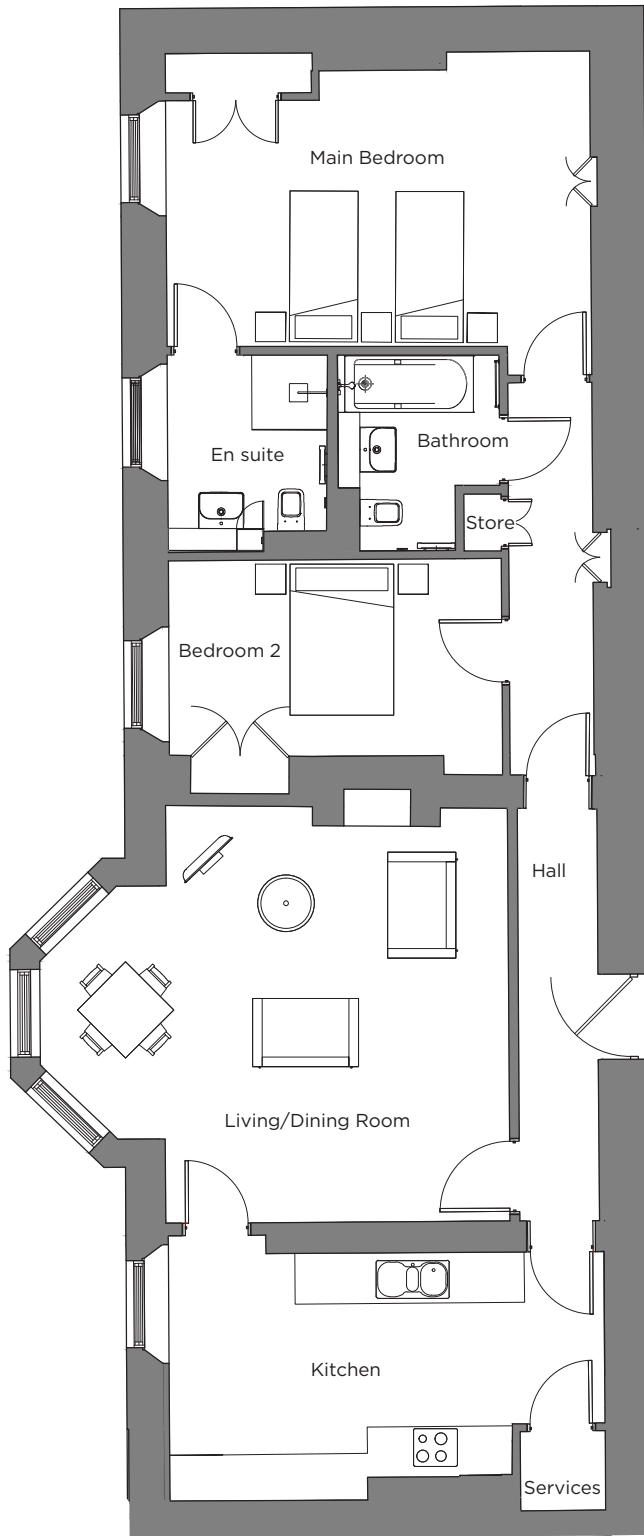


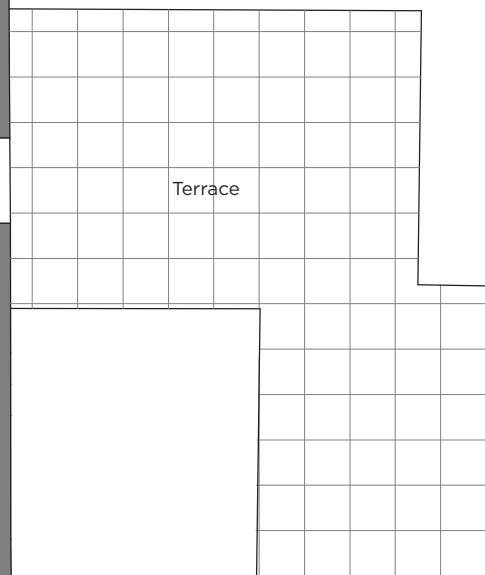
# Audley Scarcroft Park

Block D  
Ground Floor Apartment  
Plot D01



## Internal Measurements

	Metric (m)	Imperial (ft)
Living/Dining Room	5.47 x 4.52	17'11" x 14'10"
Kitchen	5.76 x 3.27	18'11" x 10'9"
Main Bedroom	5.62 x 3.90	18'5" x 12'10"
Bedroom 2	4.41 x 2.60	14'5" x 8'6"
Terrace (Approx.)	5.41 x 3.90	17'9" x 12'9"
	3.90 x 3.08	12'9" x 10'1"



Audley Scarcroft Park,  
Scarcroft Estate, Leeds,  
West Yorkshire LS14 3HS  
0800 093 8181  
[www.audleyvillages.co.uk](http://www.audleyvillages.co.uk)

These floor plans are illustrative and for marketing purposes only. Maximum measurements are shown with longer dimension quoted first. Dimensions are quoted for the main area of the room only. Built-in wardrobes not included in the overall room dimensions. Furniture shown to illustrate possible room layouts and not included in sale. Designs vary according to plot. All details should be checked at the Sales Office.

# Audley Scarcroft Park

2 bedroom, ground floor apartment



## Property highlights

- Large double bedroom with en suite shower room and built-in wardrobes
- Second double bedroom with built-in wardrobes
- Modern Nobilia kitchen and integrated appliances
- Bathroom and en suite fitted with elegant white Geberit sanitaryware
- French doors from the living room leading out to terrace
- Hallway storage
- Located in the main house
- South-west facing living room with bay window
- Membership to the Audley Club

Audley Scarcroft Park,  
Scarcroft Estate, Leeds,  
West Yorkshire LS14 3HS  
0800 093 8181  
[www.audleyvillages.co.uk](http://www.audleyvillages.co.uk)

CGIs & Photos for illustration purposes only

