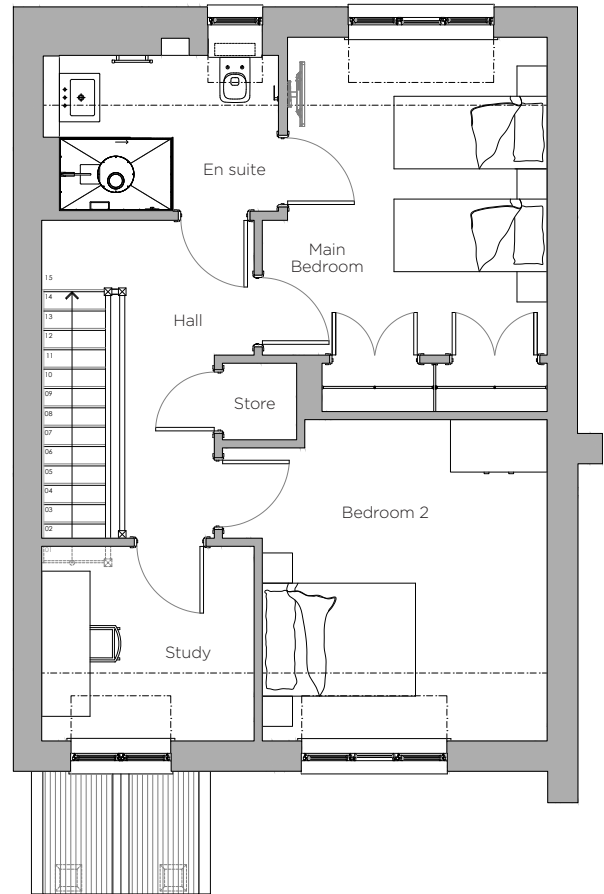
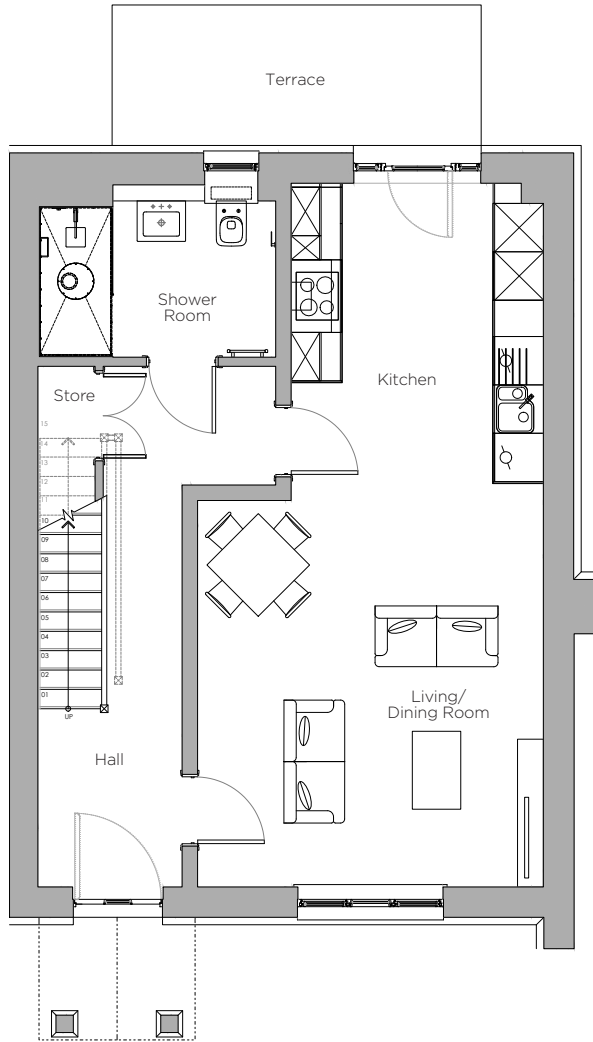


Audley Stanbridge Earls

Cottage 02
Hutchinson Cottage three bedrooms
Plot U02



Internal Measurements

Living Room & Kitchen

Metric (m)

4.2 x 8.7

Imperial (ft)

13'7" x 28'5"

Main Bedroom

3.5 x 3.9

11'4" x 12'7"

Bedroom 2

4.0 x 3.9

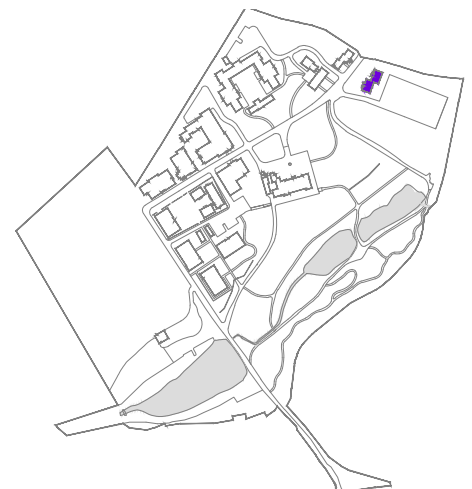
13'1" x 12'7"

Study

2.6 x 2.4

8'5" x 7'8"

Note: Dashed line on the first floor indicates roof skeliling line at 2.4m



Audley Stanbridge Earls
Mortimer Drive,
Romsey SO51 0DW
01794 278 303
www.audleyvillages.co.uk



These floor plans are illustrative and for marketing purposes only. Furniture shown to illustrate possible room layouts and not included within the sale. Designs vary according to plot. All details should be checked at the Sales Office.

Audley Stanbridge Earls

3 bedroom cottage



Property highlights

- Spacious outdoor patio space accessible from the kitchen
- Main bedroom with en suite
- Large second bedroom and additional study
- Plenty of storage throughout
- Open layout on the main floor
- Guest shower room
- Access to the Audley Club
- Luxury fittings in the SieMatic kitchen
- Access to Audley Club

Audley Stanbridge Earls
Mortimer Drive,
Romsey SO51 0DW
01794 278 303
www.audleyvillages.co.uk

CGIs & Photos for illustration purposes only

