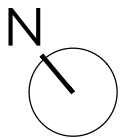
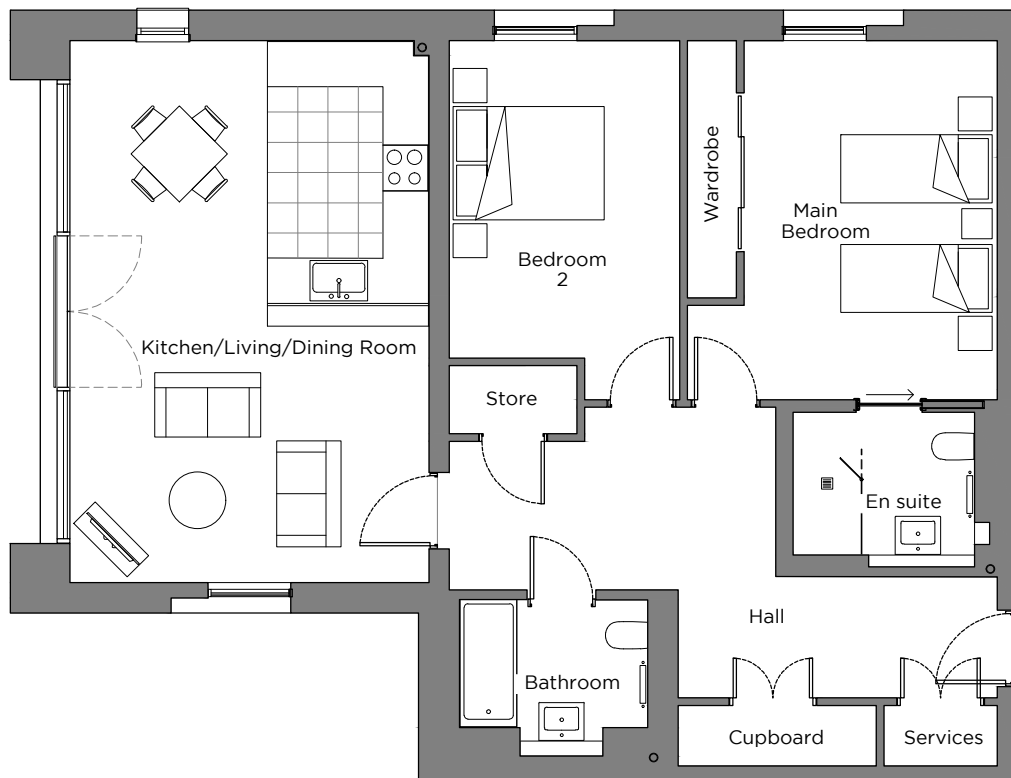


Audley Sunningdale Park

9 Crosley Court (A09)
Second Floor, two bedroom apartment
Plot 18



Internal Measurements

Metric (m)

Imperial (ft)

Kitchen/Living/Dining Room

7.17 x 4.75

23'6" x 15'7"

Main Bedroom

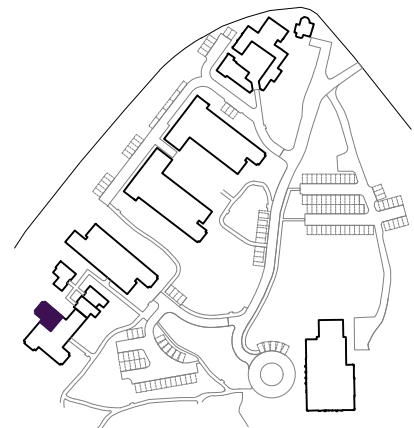
4.89 x 3.28

16'0" x 10'9"

Bedroom 2

4.18 x 2.97

13'9" x 9'9"



Audley Sunningdale Park
Silwood Road,
Ascot, Berkshire SL5 0QB
01344 859 239
www.audleyvillages.co.uk

These floor plans are illustrative and for marketing purposes only. Maximum measurements are shown with longer dimension quoted first. Dimensions are quoted for the main area of the room only. Built-in wardrobes not included in the overall room dimensions. Furniture shown to illustrate possible room layouts and not included in sale. Designs vary according to plot. All details should be checked at the Sales Office.

A: 23 June 2021 C: 224062



Audley Sunningdale Park

2 bedroom, second floor apartment



Property highlights

- New-build apartment on the second floor
- Main bedroom with large built-in wardrobe
- Fully integrated SieMatic kitchen with Neff appliances
- Luxury Villeroy & Boch bathroom
- En suite shower room in main bedroom, with space-saving sliding door
- Guest bathroom
- Hallway storage
- Carpeted and decorated throughout
- Membership to the Audley Club



Audley Sunningdale Park
Silwood Road,
Ascot, Berkshire SL5 0QB
01344 859 239
www.audleyvillages.co.uk

CGIs & Photos for illustration purposes only

