

TWO BEDROOM, FIRST FLOOR APARTMENT

**8 Northcote House, Plot 8. Audley Sunningdale Park,
Silwood Road, Ascot, Berkshire SL5 0QB
01784 557 079**

Property specifications:

- Views over the lake and Sunningdale Park
- Generously sized main bedroom with space for a seating area
- Largest property in Northcote House at 1,335 sq.ft.
- Period features throughout
- Light and airy feel
- Luxury Villeroy & Boch sanitaryware in bathroom
- Fully equipped Shaker-style SieMatic kitchen with integrated appliances
- Lift access to first floor

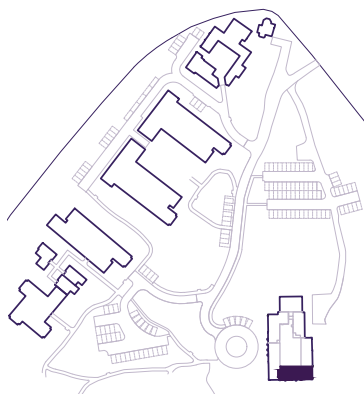
Please see the village brochure and key facts for further information.



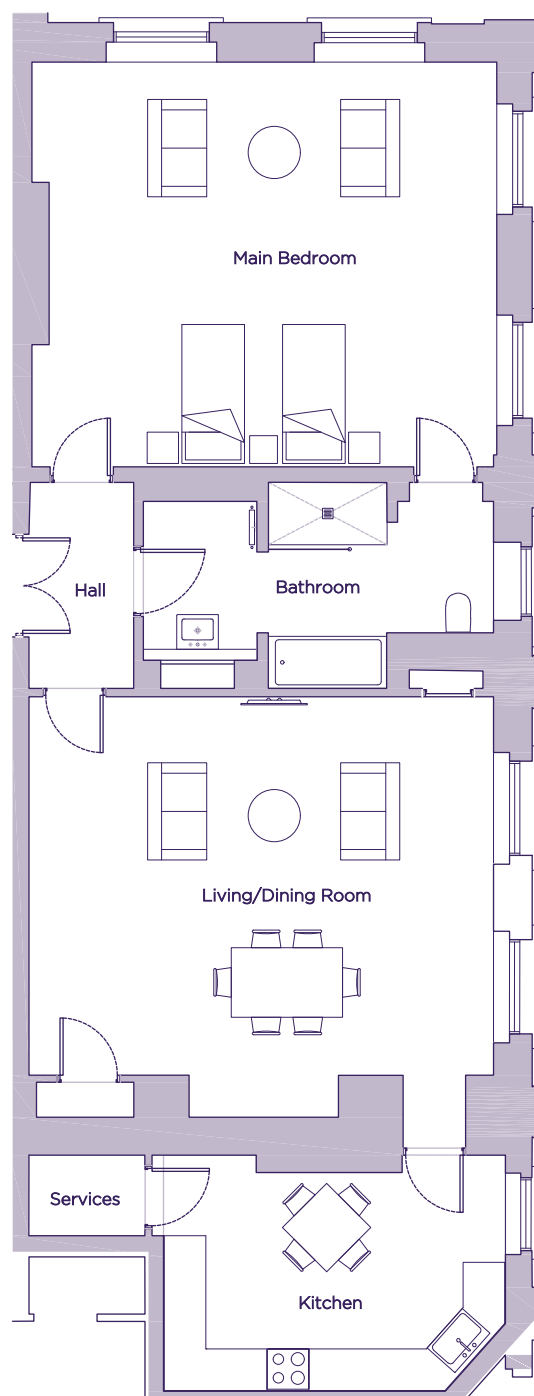
Images for illustration purposes only.

THE LAYOUT

**8 Northcote House, Plot 8. Audley Sunningdale Park,
Silwood Road, Ascot, Berkshire SL5 0QB**



Internal Measurements	Metric (m)	Imperial (ft)
Living/dining room	6.69 x 5.45	13'4" x 12'8"
Kitchen	4.92 x 3.14	10'5" x 9'2"
Main bedroom	6.70 x 5.83	12'8" x 9'2"



These floor plans are illustrative and for marketing purposes only. Maximum measurements are shown with longer dimension quoted first. Dimensions are quoted for the main area of the room only. Built-in wardrobes not included in the overall room dimensions. Furniture shown to illustrate possible room layouts and not included in sale. Designs vary according to plot. All details should be checked at the Sales Office. June 2021.