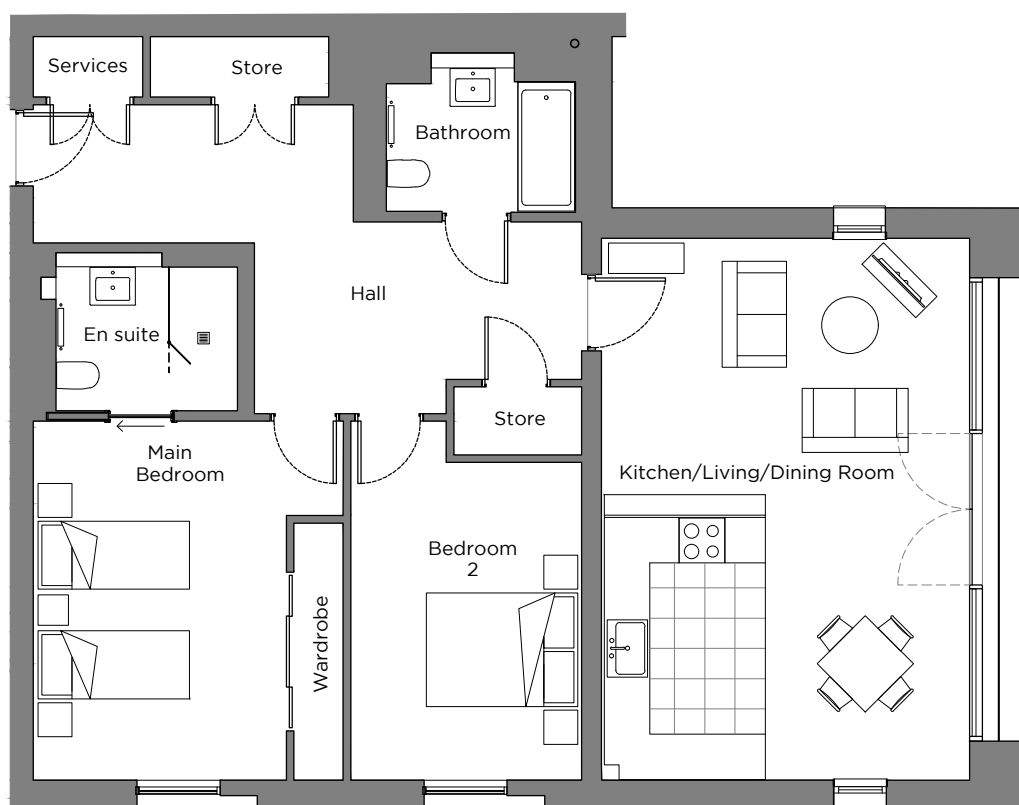


# Audley Sunningdale Park

7 Crosley Court (A07)  
First Floor, two bedroom apartment  
Plot 16



## Internal Measurements

## Metric (m)

## Imperial (ft)

Kitchen/Living/Dining Room

7.17 x 4.87

23'6" x 16'0"

Main Bedroom

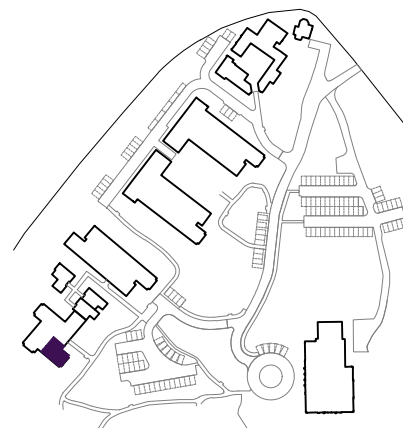
4.67 x 3.37

15'4" x 11'1"

Bedroom 2

4.06 x 2.88

13'4" x 9'5"



Audley Sunningdale Park  
Silwood Road,  
Ascot, Berkshire SL5 0QB  
01344 859 239  
[www.audleyvillages.co.uk](http://www.audleyvillages.co.uk)

These floor plans are illustrative and for marketing purposes only. Maximum measurements are shown with longer dimension quoted first. Dimensions are quoted for the main area of the room only. Built-in wardrobes not included in the overall room dimensions. Furniture shown to illustrate possible room layouts and not included in sale. Designs vary according to plot. All details should be checked at the Sales Office.

A: 23 June 2021 C: 224062



# Audley Sunningdale Park

2 bedroom, first floor apartment



## Property highlights

- Open plan kitchen
- Lift access
- Light and airy feel
- Villeroy & Boch en suite and guest bathroom
- Membership to the Audley Club
- Carpeted and decorated throughout
- SieMatic kitchen with Corian worktops and integrated appliances
- Main bedroom with built-in storage and en suite
- Second double bedroom



Audley Sunningdale Park  
Silwood Road,  
Ascot, Berkshire SL5 0QB  
01344 859 239  
[www.audleyvillages.co.uk](http://www.audleyvillages.co.uk)

CGIs & Photos for illustration purposes only

