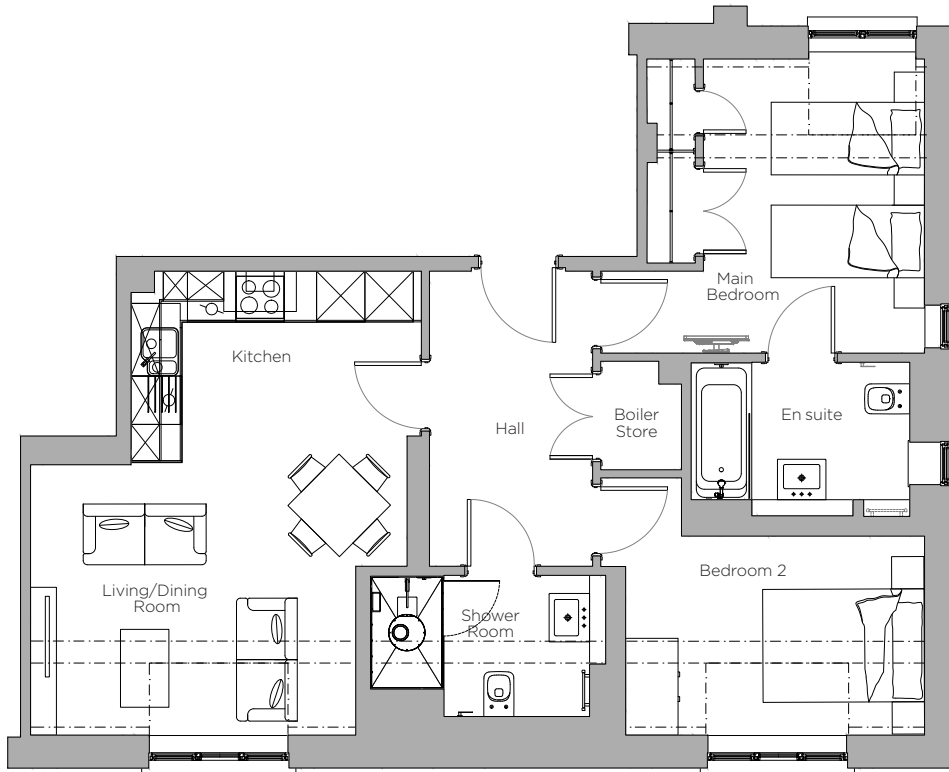


Audley Stanbridge Earls

Flat 05 Danvers Lodge
 First Floor, two bedroom apartment
 Plot D07



Internal Measurements	Metric (m)	Imperial (ft)
Kitchen/Living/Dining Room	4.6 x 5.7	14'1" x 18'7"
Main Bedroom	4.0 x 3.6	13'1" x 11'8"
Bedroom 2	4.0 x 3.1	13'1" x 10'1"

Note: Dashed line on the first floor indicates roof skiling line at 2.4m



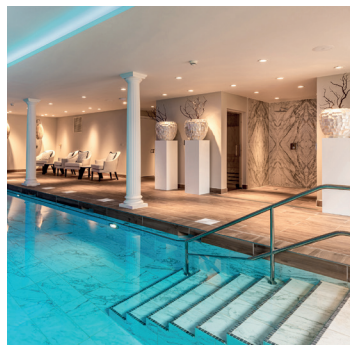
Audley Stanbridge Earls
 Mortimer Drive,
 Romsey SO51 0DW
 01794 278 303
www.audleyvillages.co.uk

These floor plans are illustrative and for marketing purposes only. Furniture shown to illustrate possible room layouts and not included within the sale. Designs vary according to plot. All details should be checked at the Sales Office.



Audley Stanbridge Earls

2 bedroom, first floor apartment



Property highlights

- Main bedroom has fitted wardrobes and an en suite bathroom
- Good size second double bedroom
- Guest shower room
- Villeroy & Boch sanitaryware in the bathroom and shower room
- Open plan kitchen, dining and living room
- The kitchen is fitted with SieMatic units and integrated appliances
- Carpeted and decorated throughout
- Lift and stairs access
- Access to the Audley Club
- Surrounded by 32 acres

Audley Stanbridge Earls
Mortimer Drive,
Romsey SO51 0DW
01794 278 303
www.audleyvillages.co.uk

CGIs & Photos for illustration purposes only

