

ONE BEDROOM, FIRST FLOOR APARTMENT

**Flat 26, Kenne Court, Plot F08. Audley Stanbridge Earls,
Mortimer Drive, Romsey SO51 ODW
01794 278 303**

Property specifications:

- Unique multi-aspect first floor apartment
- Open plan kitchen/living/dining room
- Modern kitchen with integrated appliances and SieMatic handleless units
- Private balcony accessible from living room area
- Spacious main bedroom with built-in wardrobes
- Jack & Jill style en suite bathroom fitted with Villeroy & Boch sanitaryware
- Carpeted and decorated throughout
- Private lobby and hallway storage

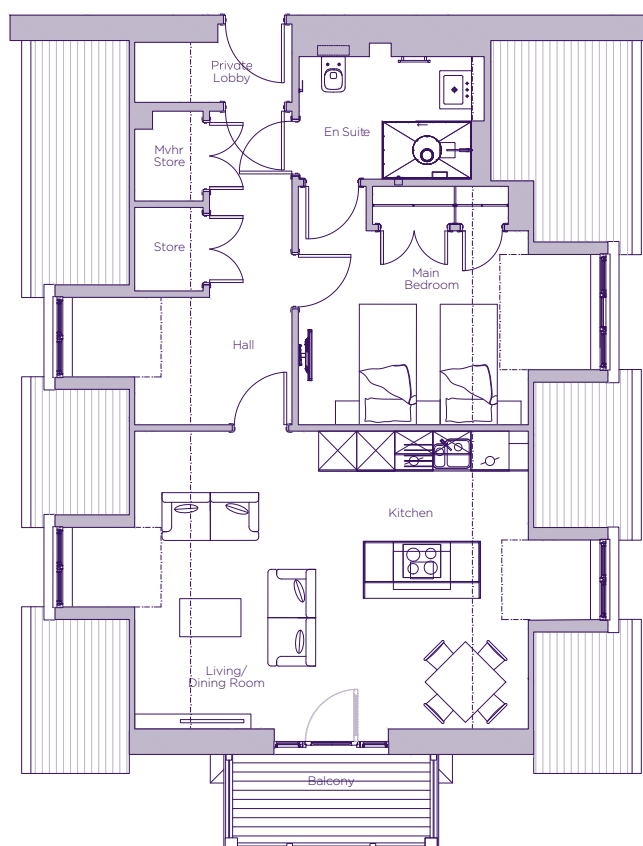
Please see the village brochure and key facts for further information.



Images for illustration purposes only.

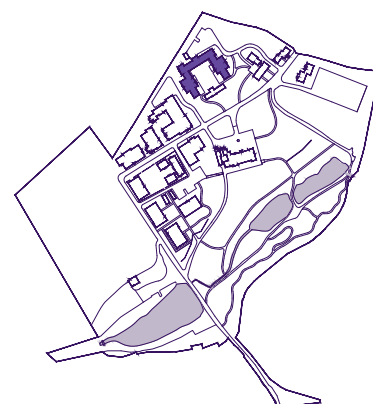
THE LAYOUT

**Flat 26, Kenne Court, Plot F08. Audley Stanbridge Earls,
Mortimer Drive, Romsey SO51 ODW**



Internal Measurements	Metric (m)	Imperial (ft)
Kitchen/living/dining room	8.1 x 4.6	26'5" x 15'0"
Main bedroom	4.6 x 3.7	15'0" x 12'1"

Note: Dashed line on the first floor indicates roof skelining line at 2.4m



These floor plans are illustrative and for marketing purposes only. Maximum measurements are shown with longer dimension quoted first. Dimensions are quoted for the main area of the room only. Built-in wardrobes not included in the overall room dimensions. Furniture shown to illustrate possible room layouts and not included in sale. Designs vary according to plot. All details should be checked at the Sales Office. November 2021.