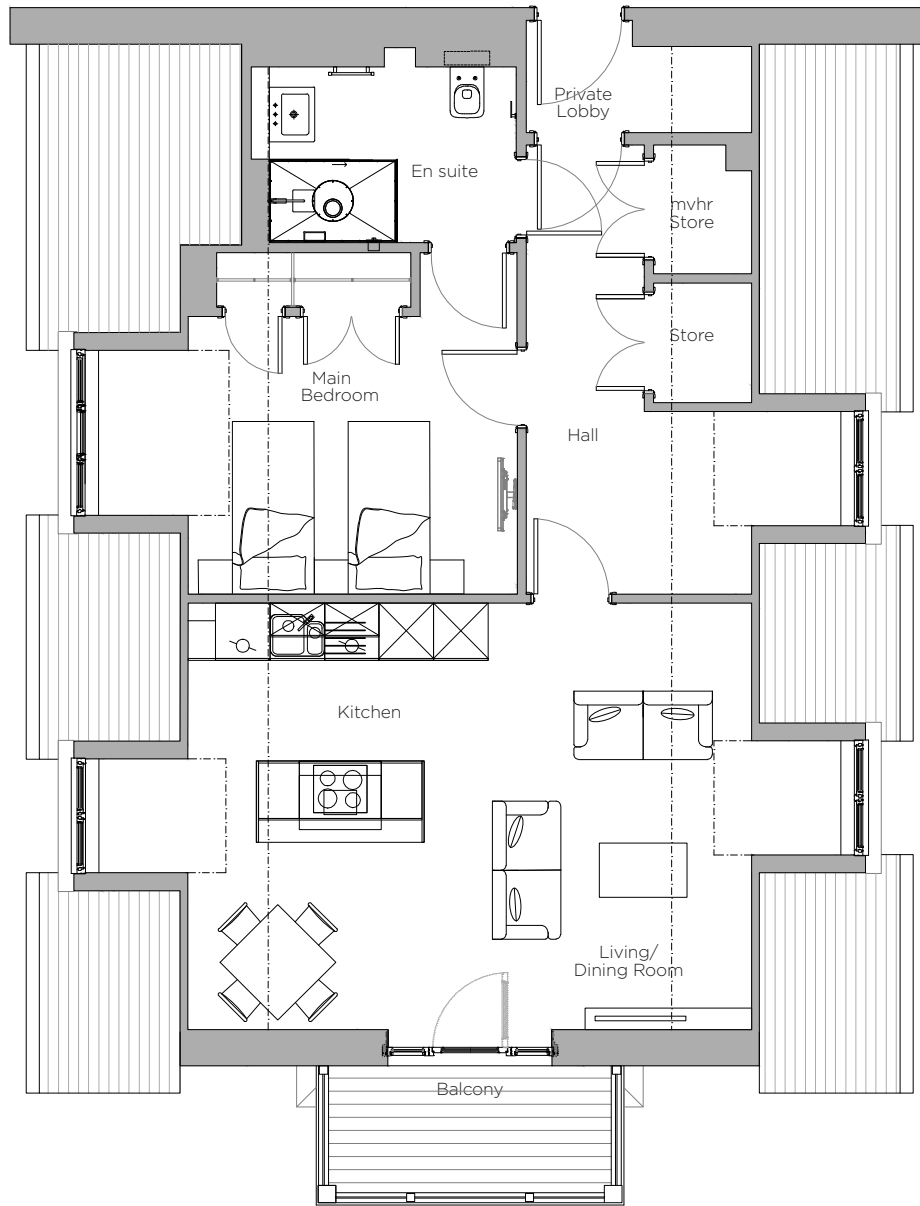


# Audley Stanbridge Earls

Flat 16 Kenne Court  
 First Floor, one bedroom apartment  
 Plot F26



## Internal Measurements

Kitchen/Living/Dining Room  
 Main Bedroom

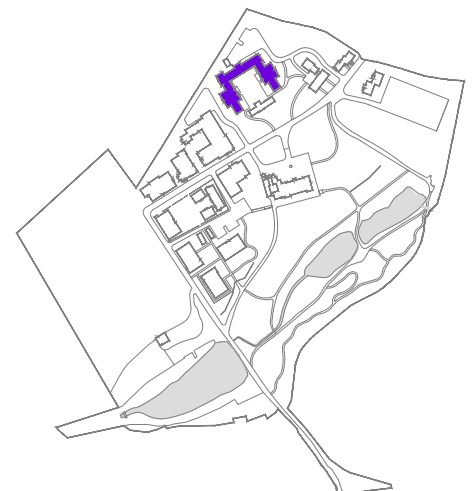
## Metric (m)

8.1 x 4.6  
 4.6 x 3.7

## Imperial (ft)

26'5" x 15'0"  
 15'0" x 12'1"

Note: Dashed line on the first floor indicates roof skelling line at 2.4m



Audley Stanbridge Earls  
 Mortimer Drive,  
 Romsey SO51 0DW  
 01794 278 303

[www.audleyvillages.co.uk](http://www.audleyvillages.co.uk) These floor plans are illustrative and for marketing purposes only. Furniture shown to illustrate possible room layouts and not included within the sale. Designs vary according to plot. All details should be checked at the Sales Office.



# Audley Stanbridge Earls

1 bedroom, first floor apartment



## Property highlights

- Plenty of windows throughout
- Ample storage
- Luxurious SieMatic kitchen with handleless units and integrated appliances
- Open plan kitchen/living/dining room
- Main bedroom with en suite and built-in storage
- Lift access
- Villeroy and Boch sanitaryware in the en suite
- Access to the Audley Club
- Underfloor heating



Audley Stanbridge Earls  
Mortimer Drive,  
Romsey SO51 0DW  
01794 278 303  
[www.audleyvillages.co.uk](http://www.audleyvillages.co.uk)

CGIs & Photos for illustration purposes only

