

FOUR BEDROOM, COTTAGE

**Cottage 01, Havering Cottage, Plot C01. Audley Stanbridge Earls,
Mortimer Drive, Romsey SO51 ODW
01794 278 303**

Property specifications:

- Large four bedroom cottage situated near the entrance to the village
- Kitchen with SieMatic units and integrated appliances
- Utility room which is accessed from the back of the cottage
- Separate living/dining rooms and study
- Downstairs WC
- Private terrace
- Main bedroom has en suite shower room
- Guest bathroom
- Two good size double rooms and one slightly smaller bedroom

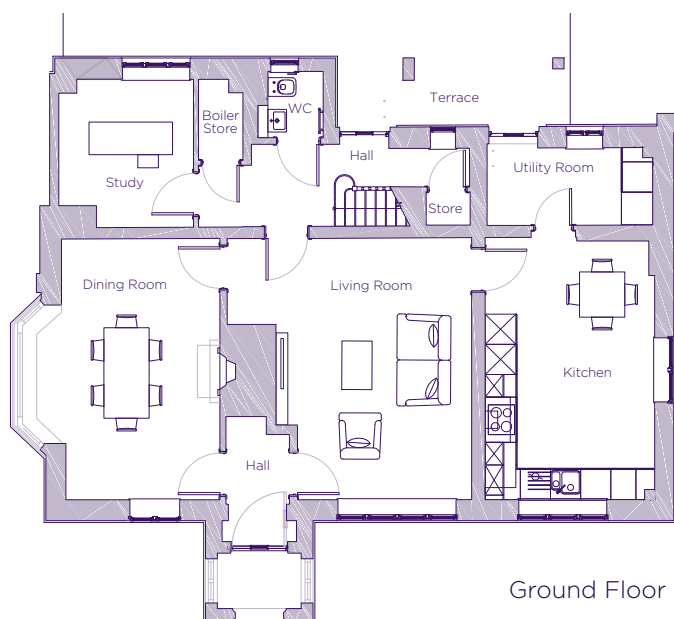
Please see the village brochure and key facts for further information.



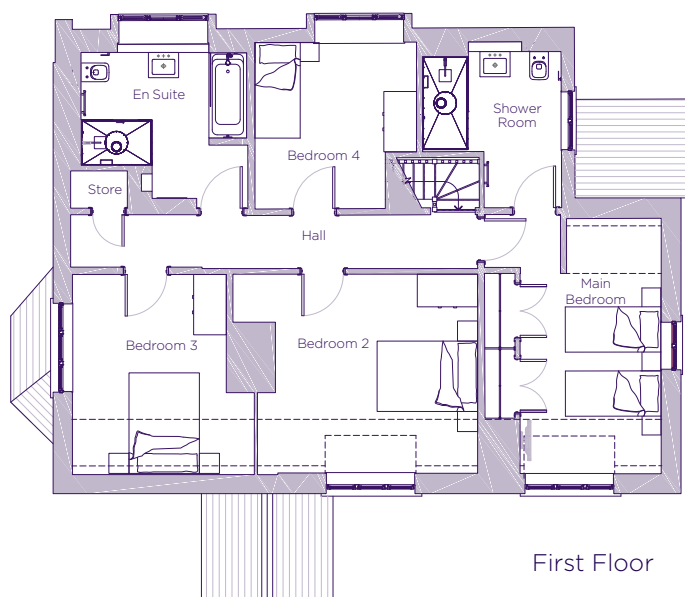
Images for illustration purposes only.

THE LAYOUT

**Cottage 01, Havering Cottage, Plot C01. Audley Stanbridge Earls,
Mortimer Drive, Romsey SO51 ODW**

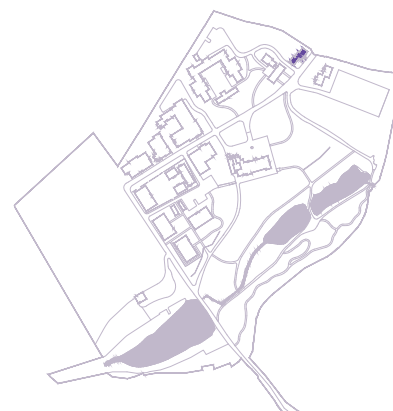


Ground Floor



First Floor

Internal Measurements	Metric (m)	Imperial (ft)
Living room	4.8 x 5.2	15'7" x 17'0"
Dining room	3.6 x 5.1	11'8" x 16'7"
Kitchen	3.3 x 5.1	10'8" x 16'7"
Utility room	3.2 x 1.5	10'4" x 4'9"
Study	2.6 x 2.9	8'5" x 9'5"
Main bedroom	2.8 x 5.1	9'1" x 16'7"
Bedroom 2	4.8 x 3.9	15'7" x 12'7"
Bedroom 3	3.6 x 3.9	11'8" x 12'7"
Bedroom 4	3.2 x 3.3	10'4" x 10'8"



These floor plans are illustrative and for marketing purposes only. Maximum measurements are shown with longer dimension quoted first. Dimensions are quoted for the main area of the room only. Built-in wardrobes not included in the overall room dimensions. Furniture shown to illustrate possible room layouts and not included in sale. Designs vary according to plot. All details should be checked at the Sales Office. November 2021.